

# Alum plant update

April 2015

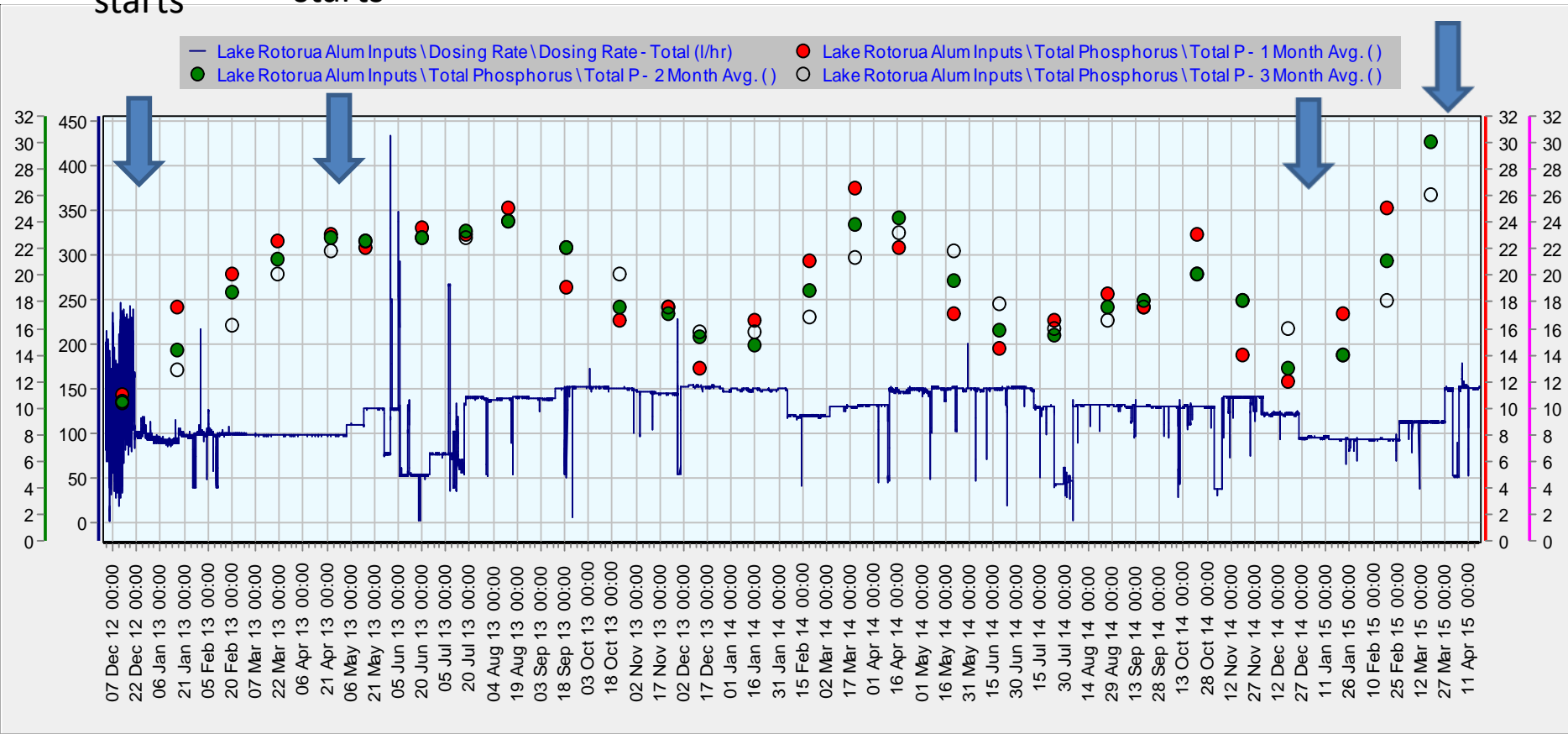
# Dec 12 to current – dosing rate and P concentrations Rotorua

Fixed rate dosing starts

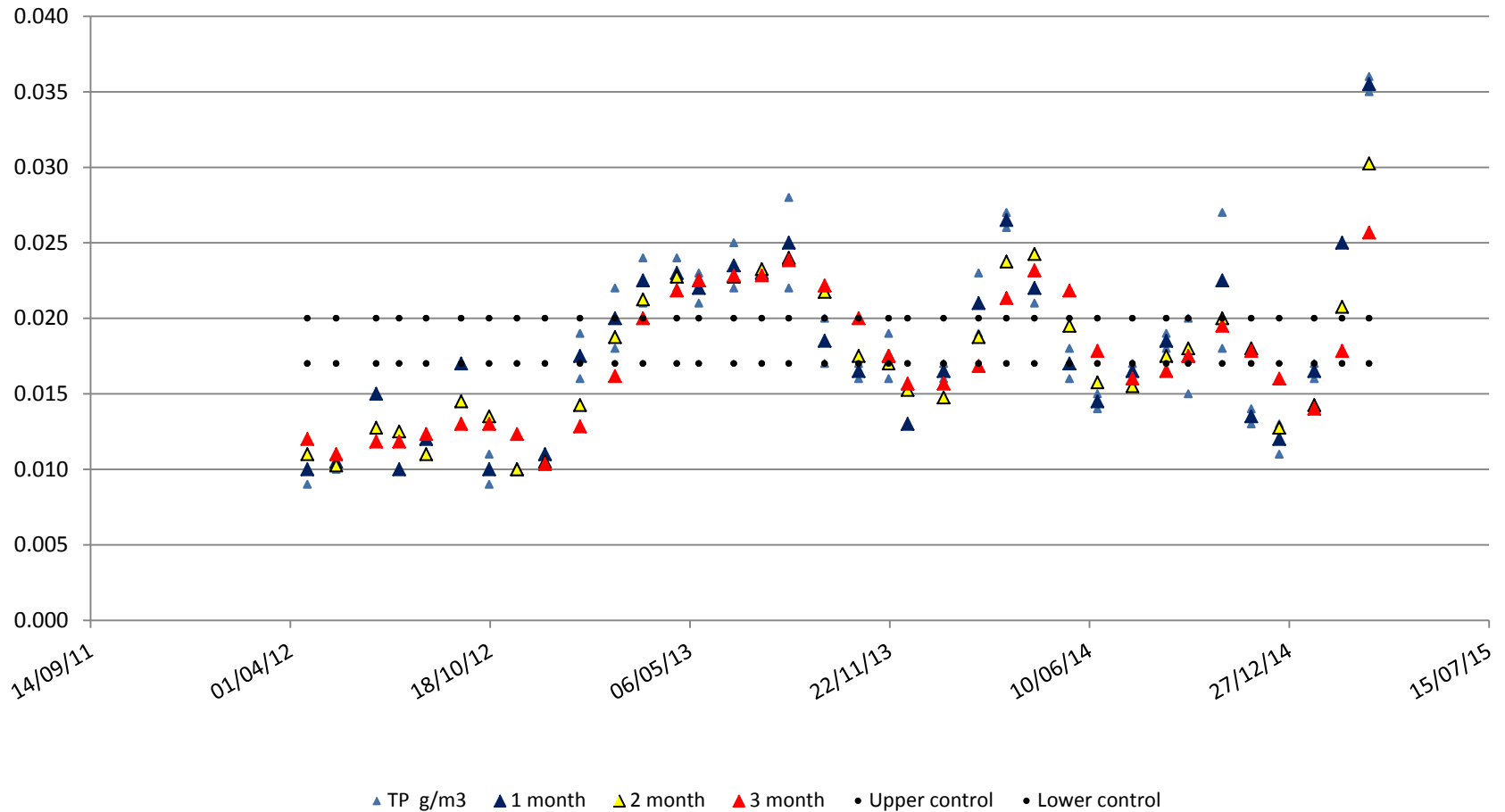
Protocol starts

Rate decrease (120 to 90 l/h)

Rate increase (90 to 110 to 150 l/h)

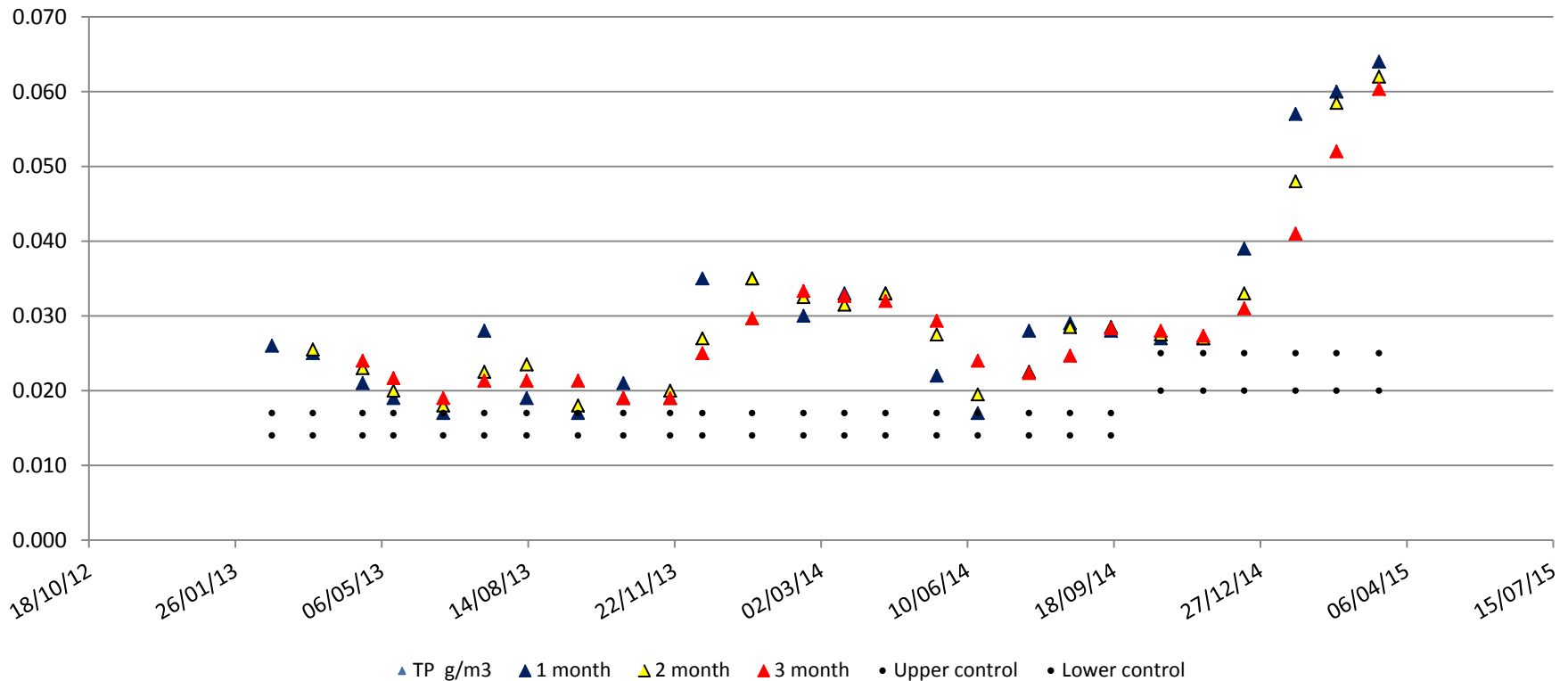


# Jan 13 to current- Rotorua P concentrations vs control target



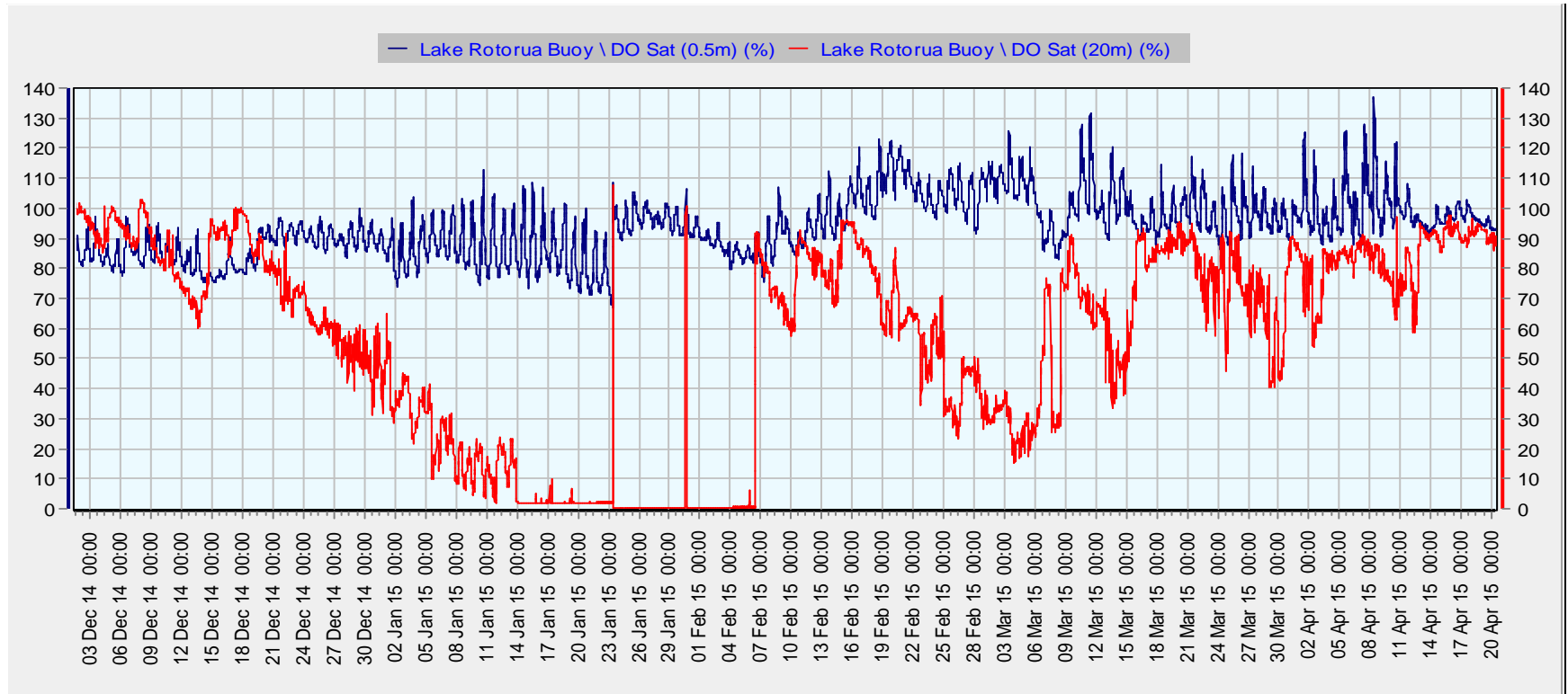
# Jan 13 to current- Rotoehu P concentrations vs control target

Dosing rate has increased from 20 l/h to 35 l/h in March 14 and then to 40 l/h in April to the current maximum dose rate of 45 l/h on September 14.



# Rotorua Lake Mixing

Site	Depth	Date Sampled							
		17.12.14		21.01.15		18.02.15		17.03.15	
		TP g/m3	DRP g/m3	TP g/m3	DRP g/m3	TP g/m3	DRP g/m3	TP g/m3	DRP g/m3
Rotorua site 2 South of Mokoia Island	6m	0.011	<0.001	0.016	0.015	0.025	<0.001	0.036	0.005
	15m	0.013	0.001	0.066	0.017	0.024	0.002	0.039	0.005
	1m above bottom	0.011	<0.001	0.120	0.078	0.034	0.007	0.037	0.004
Rotorua site 5 North of Mokoia Island	6m	0.013	0.001	0.017	<0.001	0.025	<0.001	0.035	0.004
	18m	0.012	0.001	0.086	0.050	0.024	0.003	0.039	0.006
	1m above bottom	0.014	0.001	0.090	0.056	0.026	0.005	0.041	0.008



# Rotoehu Lake Mixing

		Date Sampled							
		16.12.14		20.01.15		17.02.15		18.03.15	
Site	Depth	TP g/m3	DRP g/m3	TP g/m3	DRP g/m3	TP g/m3	DRP g/m3	TP g/m3	DRP g/m3
Rotoehu Site 3	9m	0.039	0.011	0.057	0.015	0.060	0.018	0.064	0.018
	1m above bottom	0.044	0.013	0.049	0.017	0.052	0.026	0.061	0.019

