

# **Forestry economics and market outlook to support land-owner decisions on lower nutrient leaching systems**

Tim Payn, John Moore, Graham West



# Project Objectives

- Update and add to the earlier study entitled “*Profitability of converting pastoral farmland to forestry in the Taupo basin*”
  - More robust modelling of forest growth
  - Growth gains from improved germplasm
  - Include economic value of non-timber crops (e.g. manuka, ginseng)
  - Include pricing of ecosystem services such as C, N, recreation, water
  - Integrate forestry into existing farming operations, instead of viewing it in isolation
  - Provide an update on the drivers of log supply and demand for the Central North Island region



# Project Components

- Updated domestic market analysis
  - Estimate current and future log demand
  - Considering new and planned processing capability
  - Future wood supply from the region
- Case study of three land-owners
  - Integration of small- to medium scale planting
  - Explore a range of forestry options including non-timber products
- Field-day workshop to discuss interim results



# Case Studies

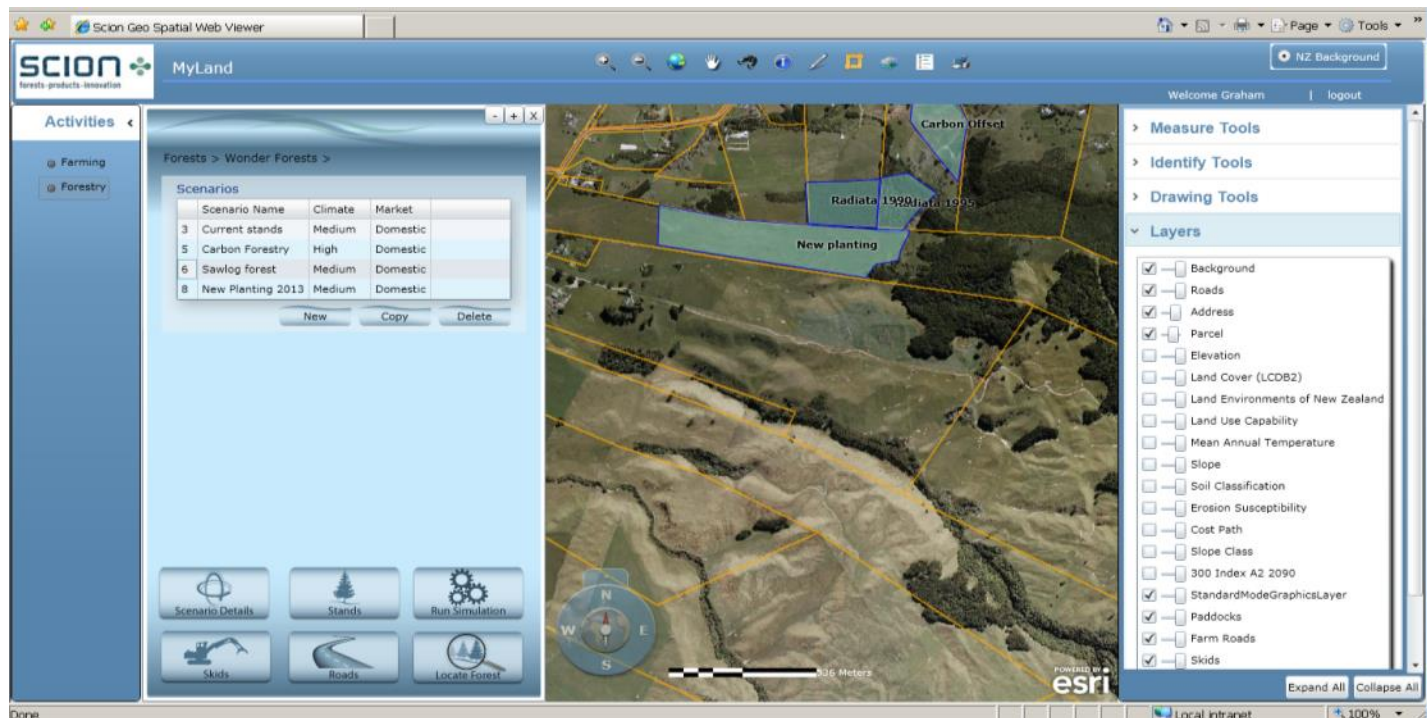
- Three case studies
  - 1 in Lake Taupo catchment (under discussion with LTPT)
  - 2 in the Rotorua Lakes region
- Need help to find the two Rotorua Lakes study sites
- Attributes of a potential case study site
  - Strong linkages with a farm consultant
  - Nutrient balance information from Overseer
  - Willingness to engage in the process
  - Different farming systems (e.g. dry stock vs. dairy)





# MyLand – Linking Farming and Forestry

- Express forestry economic performance in metrics that farmers understand
- What does afforestation mean for whole-farm income?



# MyLand – web tool for land owners and their advisors

MyLand

Search for map features...

My Properties Getting Around Maps & Data Sources Tasks Analysis

Point Identify Freehand Identify Line Identify Polygon Identify Rectangle Identify Buffered Identify

Location Information

Measure Distance Measure Area Add as Drawing Erase Drawing Clear All

Measurement Info

Total Distance: 0.00

Last Segment: 0.00

Units: Feet (ft)

XY Enter Coords Plot Coords Clear Coords

Clicked Coordinates: Lat: -40.7806 Lon: 172.8895

Coordinate System: Lat/Lon (DD)

Coordinate Tools

My Properties

Properties > Scenarios >

Westview Farm

Scenario

New Scenario Save Cancel

Scenario Name: Current Practice

Description: Current property management regime

Climate change scenario: None

Infrastructure Prices and Costs

Management Units

Open New Delete

Name	Area (ha)	Land Uses
Front	10.964	Sheep
Middle	17.567	Sheep
South Corner	14.8	Sheep
Forest - Pine	4.856	Sheep->Forestry
Radiata Pine	3.692	Forestry->Sheep
Forest - Cypress	5.819	Sheep->Forestry
Forestry - Euc	4.658	Sheep->Forestry
Forestry - Redwoods	7.036	Sheep->Forestry
Riparian	1.74	Forestry

I want to...

Front

Radiata Pine

Forest - Cypress

Forest - Redwoods

Forest - Pine

Forestry - Euc

Forestry - Redwoods

Riparian

South Corner

Cattle

1000 ft 250 m

X Y



# Questions?

## Contact:

Dr John Moore

Scientist, Forest Systems

[john.moore@scionresearch.com](mailto:john.moore@scionresearch.com)

