

# Koaro Restoration Project

He ika tuturu i tuku iho i ngā Matua  
Tupuna, hei taonga no nehera ki  
Te Ao Hurihuri nei.



Kōaro-(*Galaxias brevipinnis*)

# Koaro Restoration Project

- **Koaro**-from the Galaxiidae whanau (includes inanga and kokopu native freshwater fish species)
- Born out of the need to arrest the decline of koaro in the Rotorua Lake catchment.
- Traditionally one of the primary sources of animal protein for the Te Arawa Lakes tribes.
- Have declined in the Rotorua lakes for a variety of reasons.
  - Reductions in water quality and habitat decline
  - Introduction of trout to the Rotorua Lakes saw a dramatic and sustained decline in adult koaro numbers.
- Now only found in tributaries too shallow for trout

# Koaro Restoration Project

## what is a Kōaro?

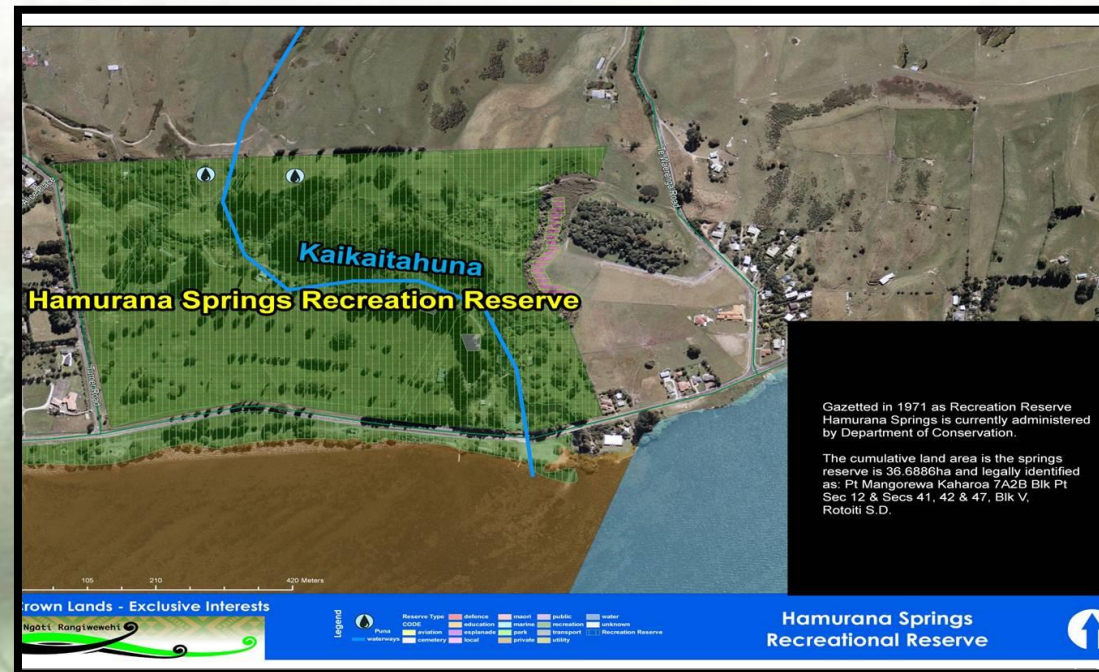
- Excellent climbers (ie. Waterfalls etc) using fins and suction cups.

Climbing Koaro.mp4





- # Koaro Restoration Project
- To trial options and population effects of trout removal from koaro habitat, Bay Of Plenty Regional Council, Te Arawa Lakes Trust, Ngati Rangiwewehi, Department of Conservation, and Fish and Game Eastern Region have established the Hamurana koaro project in the Waitarere tributary at the Hamurana Springs Recreation Reserve.
- 
- Hamurana Springs Recreation Reserve**
- Kaikaitahuna**
- Gazetted in 1971 as Recreation Reserve Hamurana Springs is currently administered by Department of Conservation.
- The cumulative land area is the springs reserve is 36 6886ha and legally identified as: Pt Mangorewa Kaharoa 7A2B Blk Pt Sec 12 & Secs 41, 42 & 47, Blk V, Rotoiti S.D.
- Hamurana Springs Recreational Reserve**



# Kōaro Restoration Project

## Purpose:

- To support the aspirations of Ngati Rangiwewehi at Hamurana
- To work collaboratively to protect and restore relict koaro populations in lakes tributaries
- To trial the use of a trout barrier and removal of existing rainbow trout as a method of koaro habitat restoration.
- To assist Ngati Rangiwewehi/Te Arawa Lakes Trust in fulfilling their responsibilities of kaitiakitanga over their taonga by building iwi capability to undertake koaro restoration and monitoring work





# Koaro Restoration Project

## What has happened to date

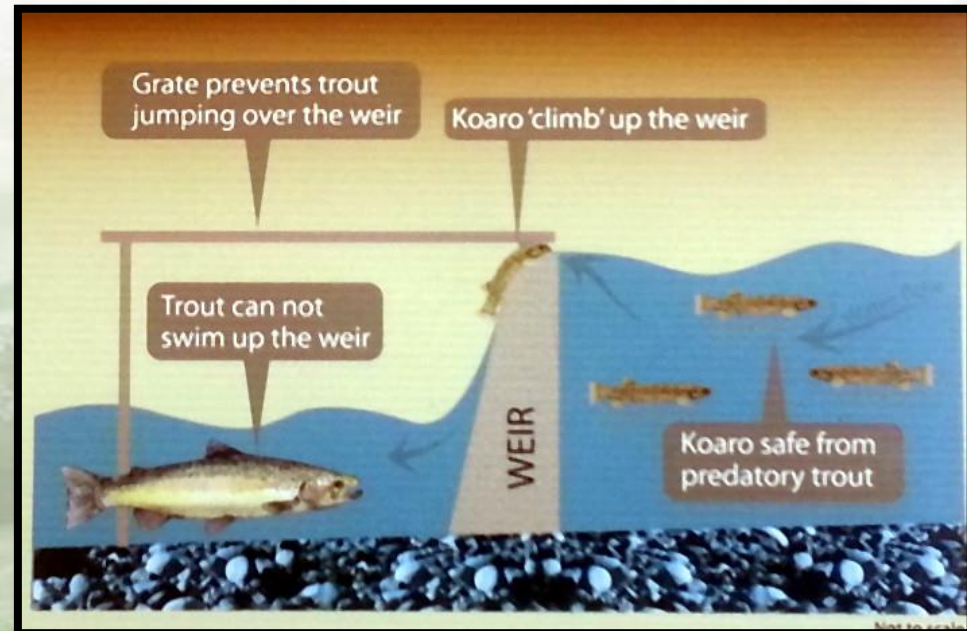
- Bi-annual koaro monitoring
  - Koaro trapped are measured and re-released.





# Koaro Restoration Project

A range of factors were considered in selecting Hamurana as a trial site, however if the trout barrier is shown, by this trial, to be a successful method for protecting and enhancing koaro populations, this project will provide a template for further koaro restoration efforts in the Rotorua lakes catchments.





# Koaro Restoration Project

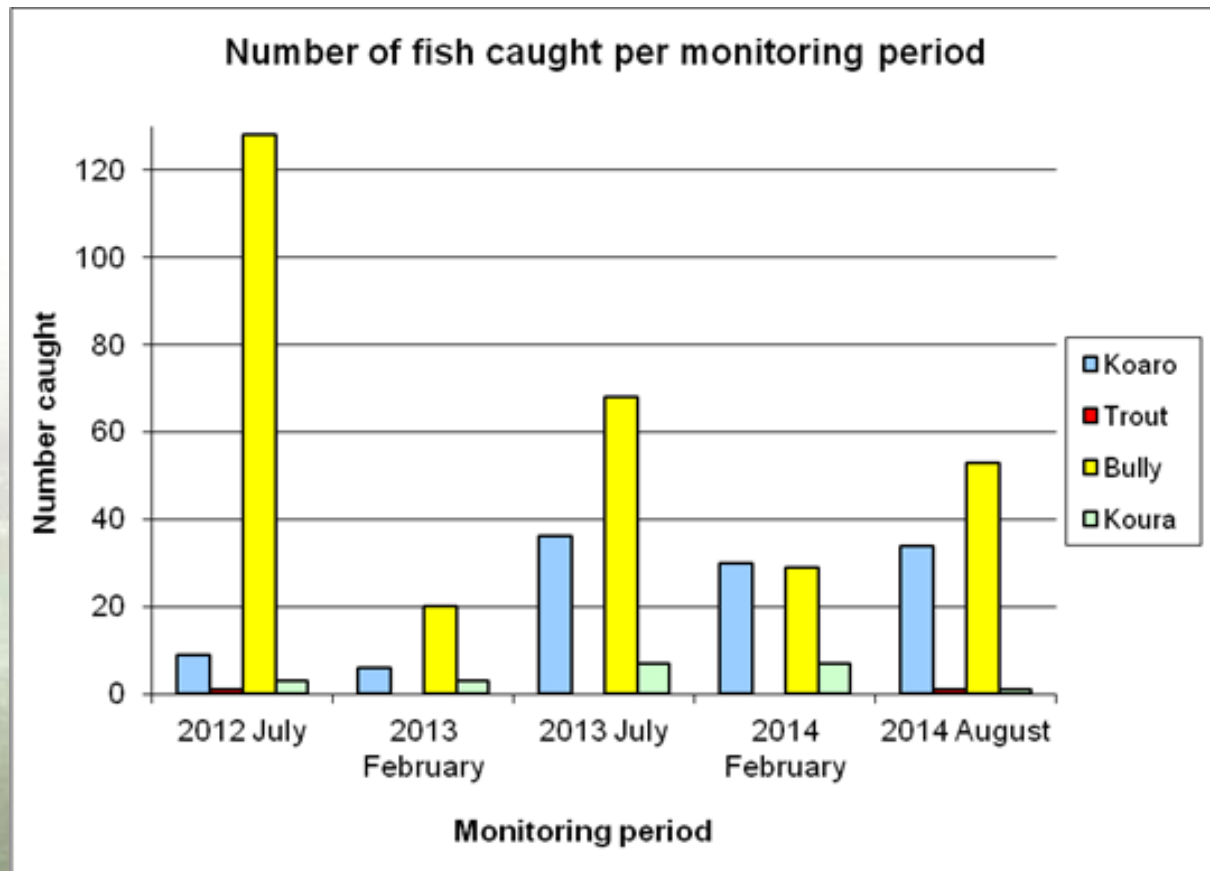
## What has happened to date

- Wader safety training
- Trout removed from the Waitarere stream (on-going)





# Koaro Restoration Project Findings to date....



# Koaro Restoration Project

## What will happen next two years?

- ❖ Hamurana Springs Recreation Reserve transferred to Ngāti Rangiwewehi as an T.O.W. Settlement outcome.
- ❖ Ngāti Rangiwewehi is now in a better position to understand the importance and significance of this taonga species.
- ❖ A better understanding of the historical and cultural context of the Koaro and its natural habitat.
- ❖ To increase our peoples knowledge and understanding of the Mātauranga Māori and science involved in native freshwater fisheries restoration.
- ❖ Further training opportunities to up-skill our people to survey and monitor the species for restoration purposes.
- ❖ On-going relationship development with all parties involved with the restoration of this taonga species.





# **TE TARI TAI AO**

**(Iwi Environmental Unit)**

Rangiwewehi Charitable Trust  
Te Maru O Ngati Rangiwewehi Iwi Authourity  
16 Tauī Street  
Po Box 131 Ngongotaha

Ph: 07-3575814

[info@rangiwewehi.com](mailto:info@rangiwewehi.com)