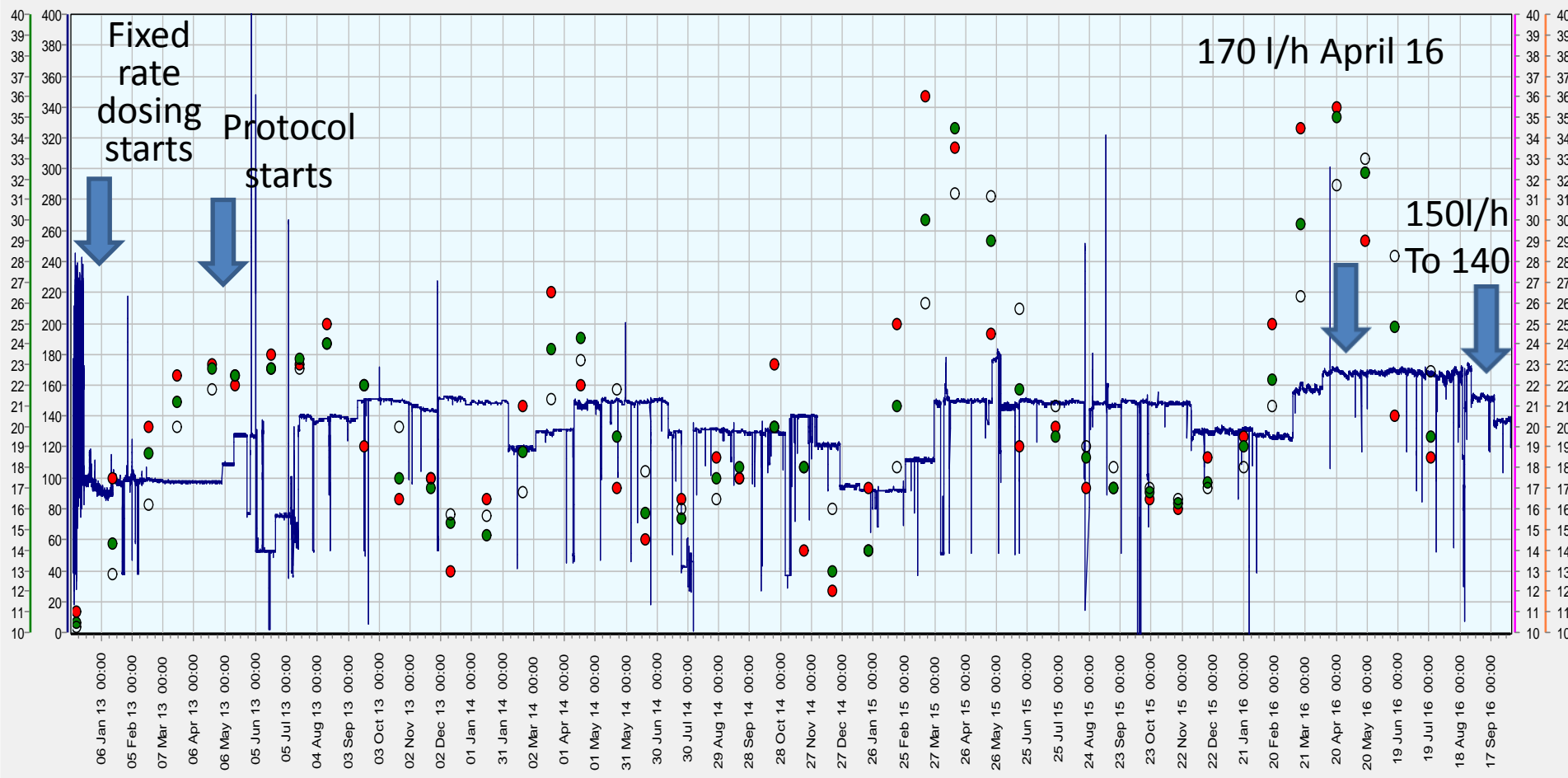


# Alum plant update

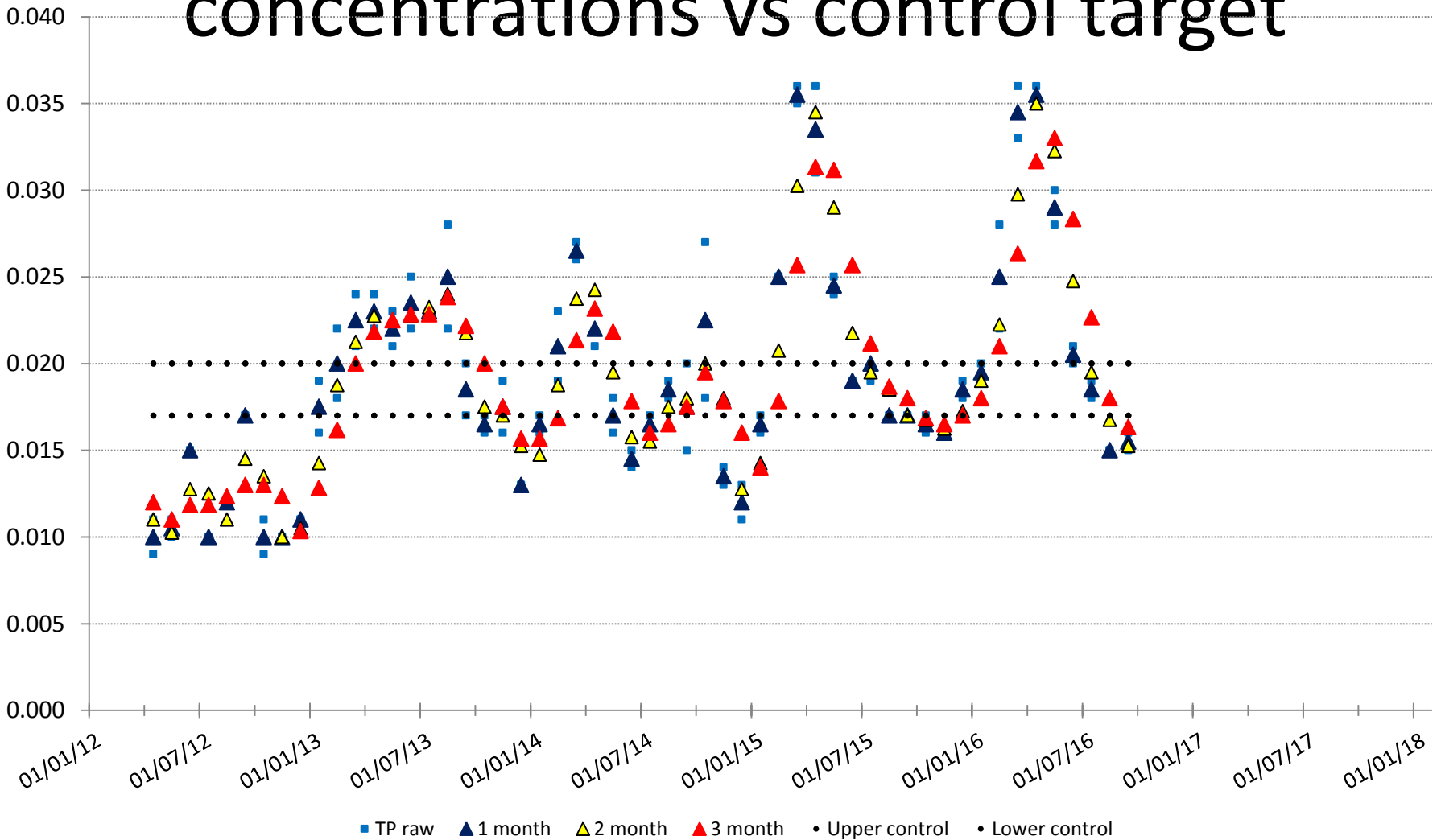
October 2016

# Dec 12 to current – dosing rate and TP concentrations Lake Rotorua

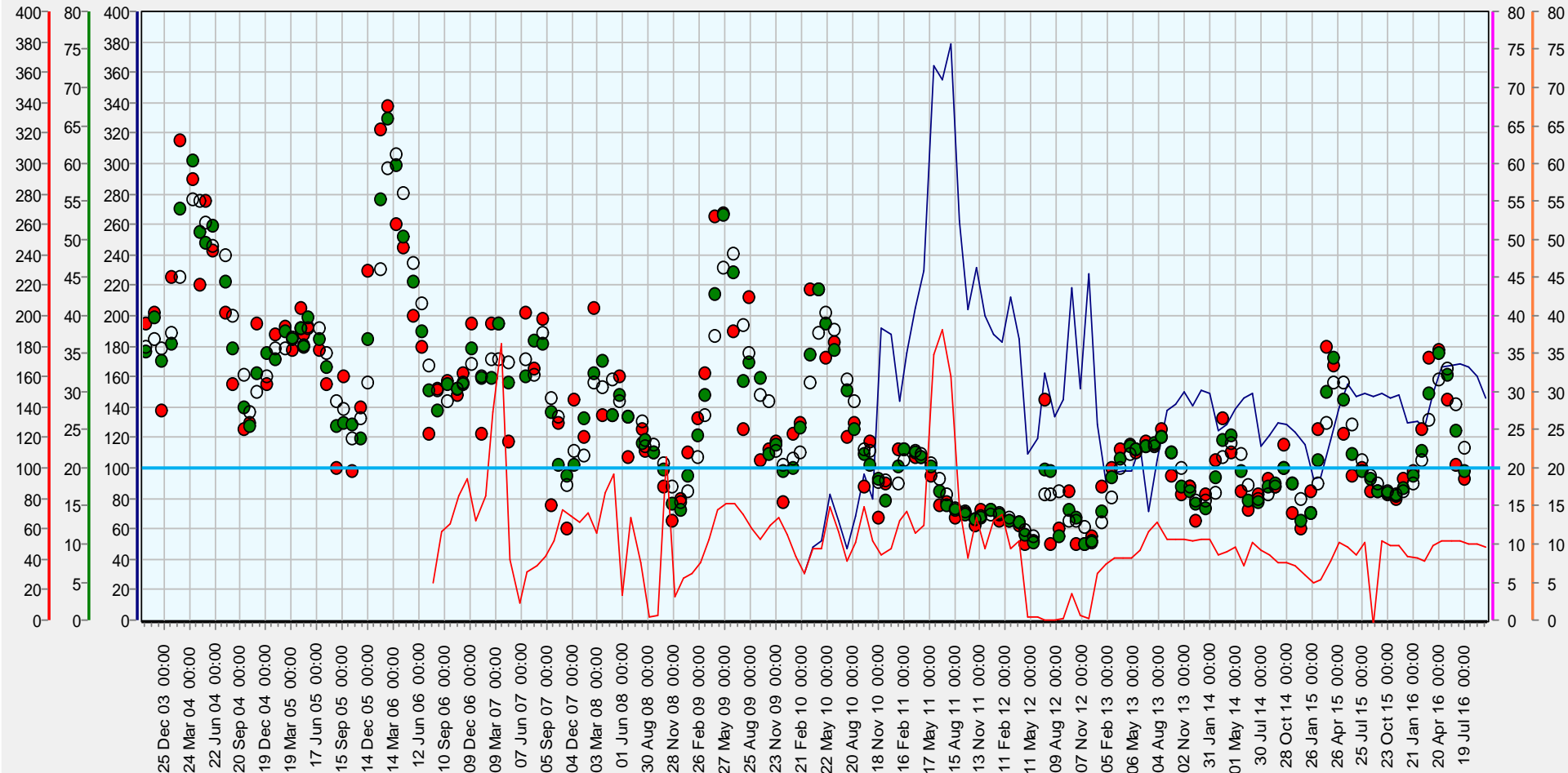
— Lake Rotorua Alum Inputs \ Dosing Rate \ Dosing Rate - Total (l/hr)    ● Lake Rotorua Alum Inputs \ Total Phosphorus \ Total P - 1 Month Avg. ( )    ● Lake Rotorua Alum Inputs \ Total Phosphorus \ Total P - 2 Month Avg. ( )  
○ Lake Rotorua Alum Inputs \ Total Phosphorus \ Total P - 3 Month Avg. ( )



# Jan 13 to current- Rotorua P concentrations vs control target



- Lake Rotorua AlumInputs \ Dosing Rate \ Dosing Rate - Total (l/hr)
- Lake Rotorua AlumInputs \ Total Phosphorus \ Total P - 1 Month Avg. ( )
- Lake Rotorua AlumInputs \ Total Phosphorus \ Total P - 2 Month Avg. ( )
- Lake Rotorua AlumInputs \ Total Phosphorus \ Total P - 3 Month Avg. ( )
- Utuhina at Depot St \ Dosing Pump Rate \ Dosing Rate - L/hr (l/hr)



# Jan 13 to current- Rotoehu P concentrations vs control target

Dosing rate has increased from 20 l/h to 35 l/h in March 14 and then to 40 l/h in April 14 to the current maximum dose rate of 45 l/h on September 14.

