

# Alum plant update

May 2016

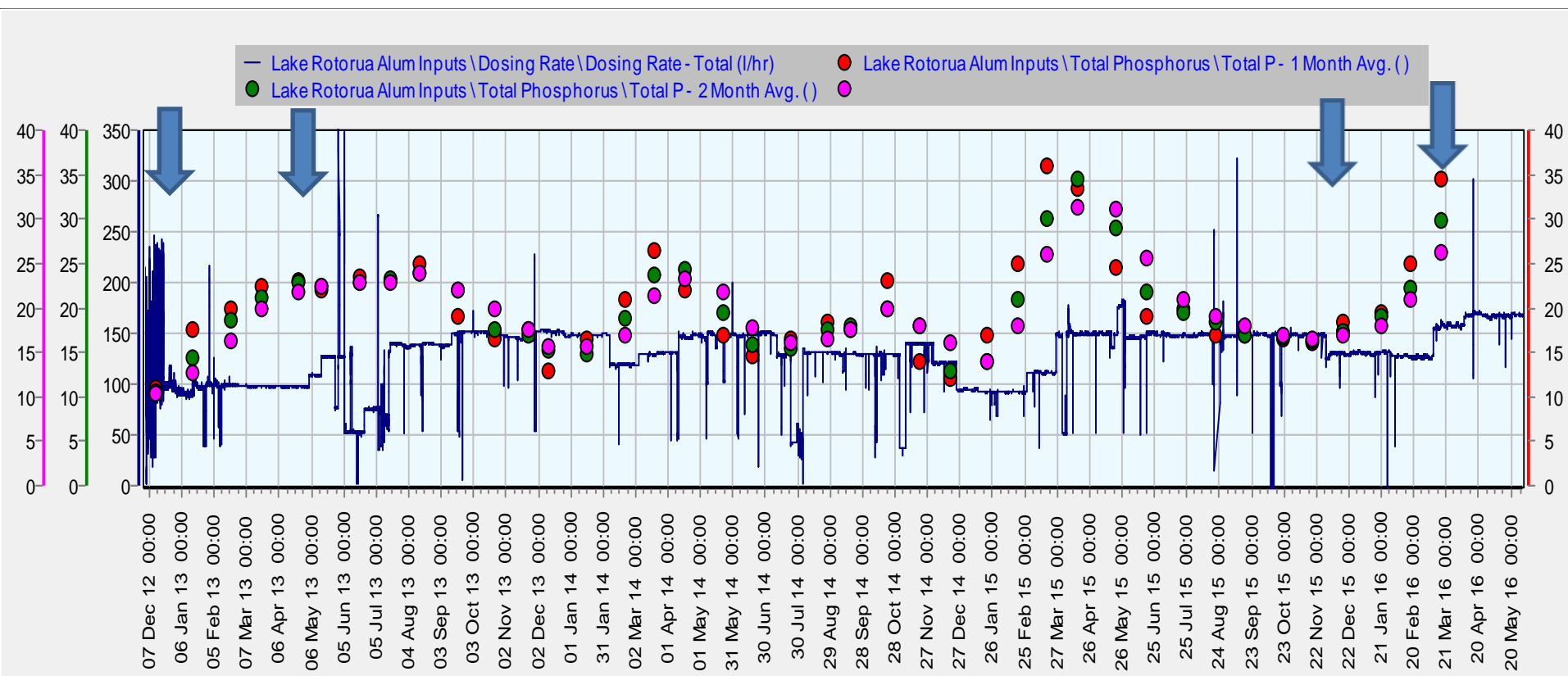
# Dec 12 to current – dosing rate and TP concentrations Lake Rotorua

Fixed  
rate  
dosing  
starts

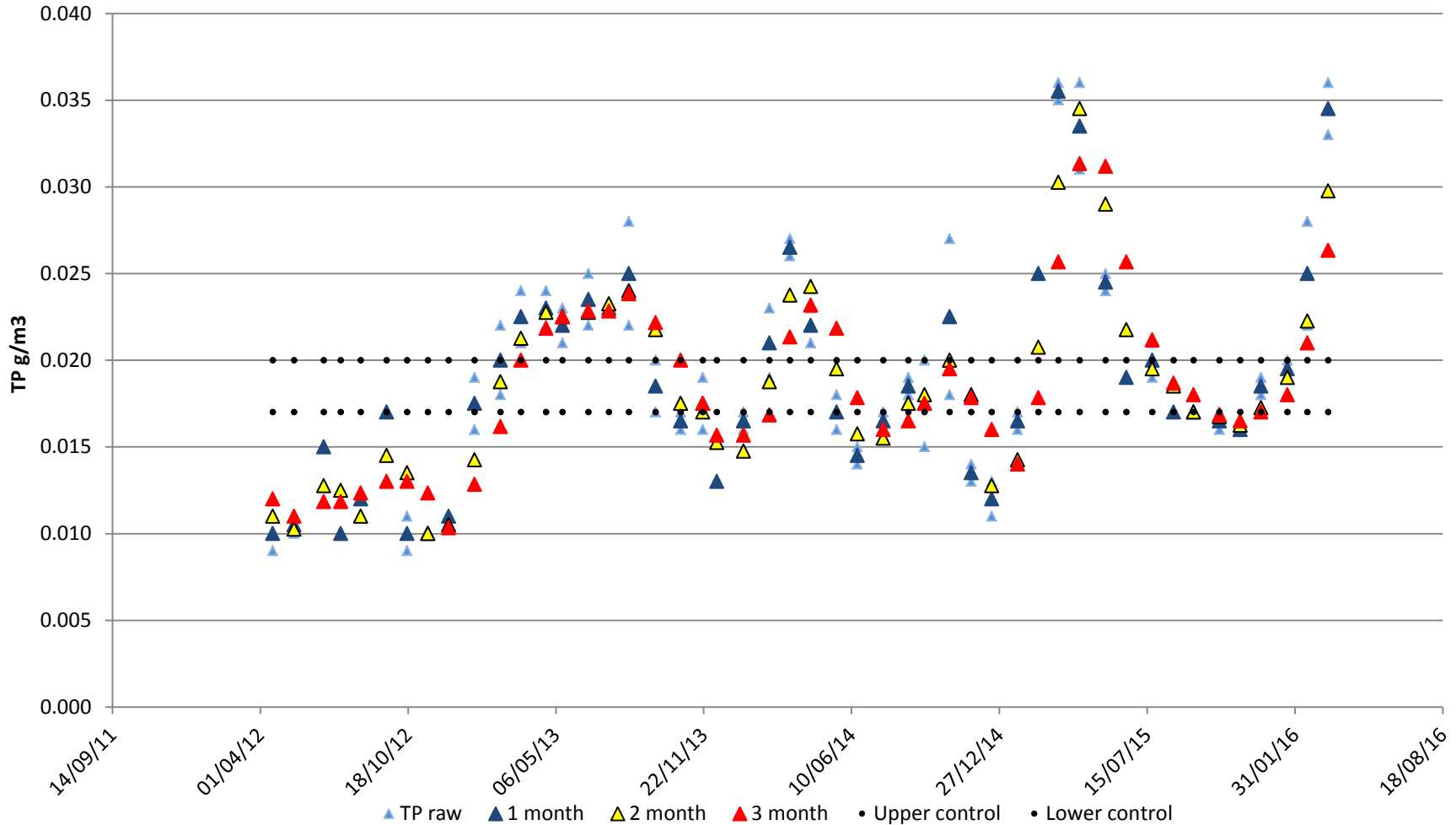
Protocol  
starts

Rate decrease  
(from 150 to  
130 l/h) in Nov  
15

Rate increase  
(130 to 160 to  
170 l/h) in  
April 16

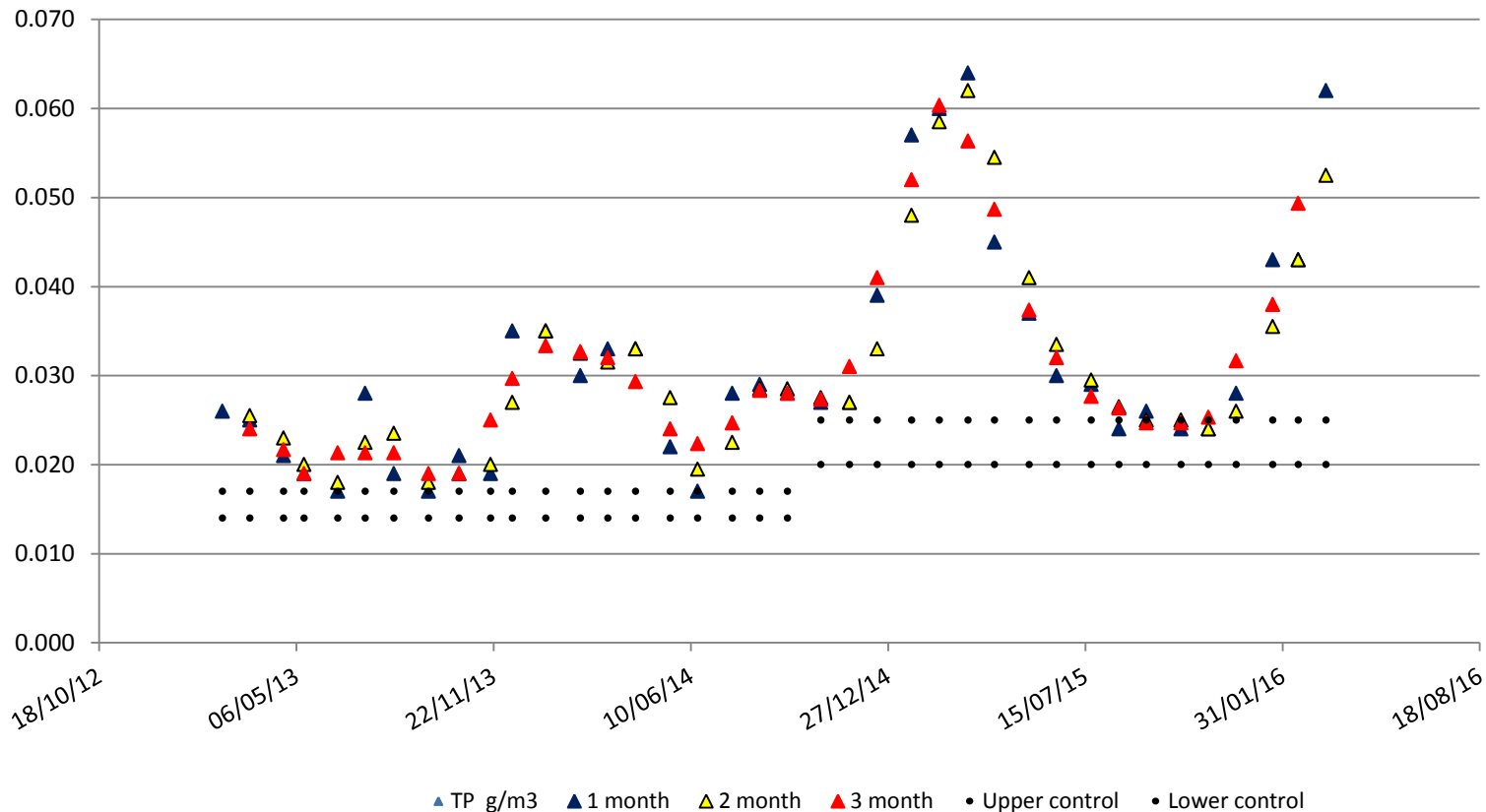


# Jan 13 to current- Rotorua P concentrations vs control target



# Jan 13 to current- Rotoehu P concentrations vs control target

Dosing rate has increased from 20 l/h to 35 l/h in March 14 and then to 40 l/h in April 14 to the current maximum dose rate of 45 l/h on September 14.



# Rotorua Lake Mixing

Date Sampled	Site	Depth	BOP Labstar No	Lab id	TP g/m3	DRP g/m3
17.02.16	Rotorua site 2 South of Mokoia Island	6m	BOP130002	16/0369-1	0.028	0.002
17.02.16	Rotorua site 2 South of Mokoia Island	15m	BOP130002	16/0369-2	0.027	0.001
17.02.16	Rotorua site 2 South of Mokoia Island	1m above bottom	BOP130002	16/0369-3	0.063	0.04
17.02.16	Rotorua site 5 North of Mokoia Island	6m	BOP130027	16/0369-5	0.022	0.001
17.02.16	Rotorua site 5 North of Mokoia Island	18m	BOP130027	16/0369-6	0.025	0.002
17.02.16	Rotorua site 5 North of Mokoia Island	1m above bottom	BOP130027	16/0369-7	0.072	0.047
16.02.16	Rotoehu site 3	9m	BOP130029	16/0360-16	0.043	0.008
16.02.16	Rotoehu site 3	1m above bottom	BOP130029	16/0360-17	0.054	0.091

Samples collected at 8am and mixing occurred at approximately 12pm

