

# Opportunity Symposium

## Lake Rotorua Nitrogen Rules Context and History

Tuesday 16 June 2015

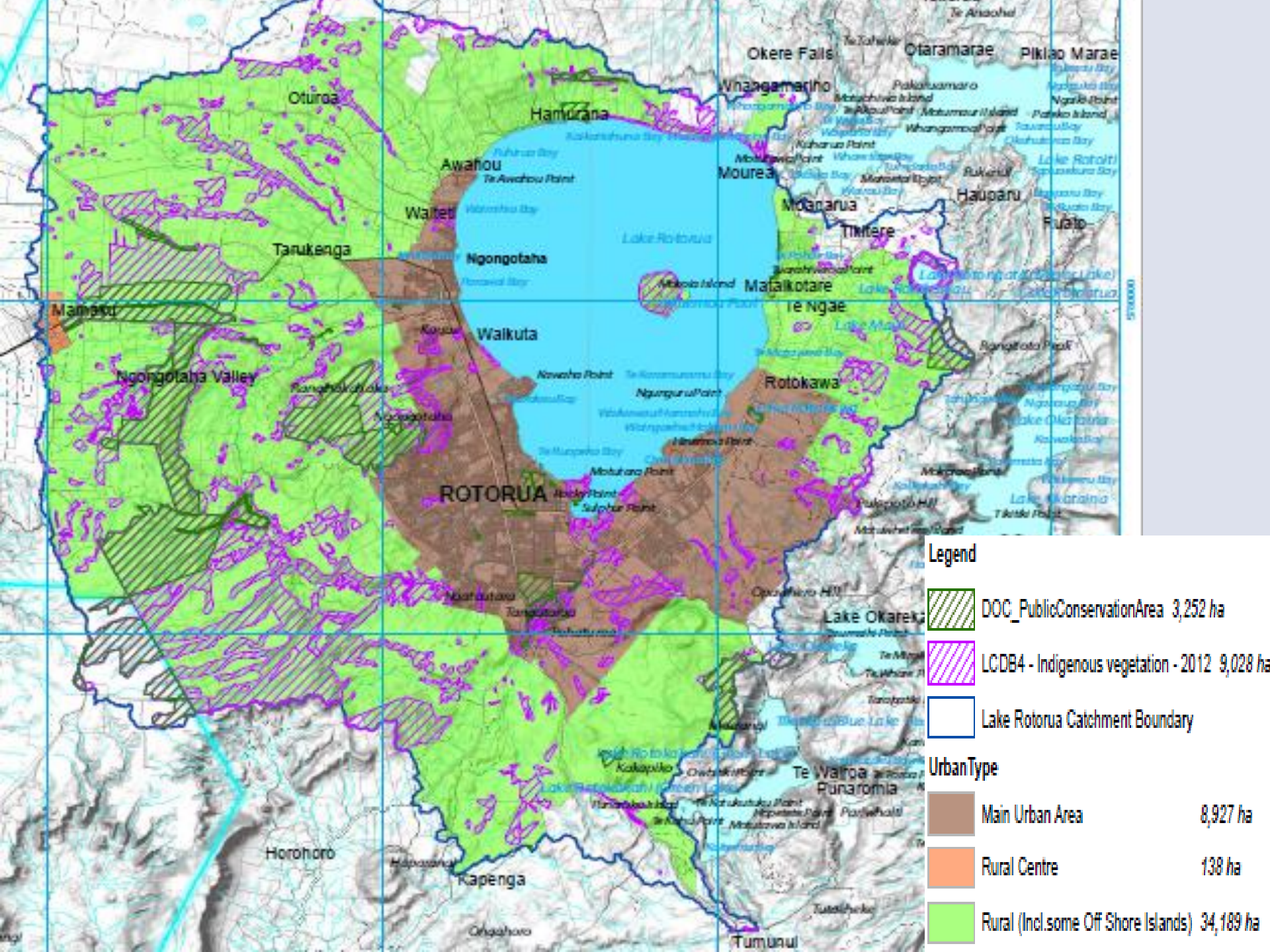


**Proud Partners**











# Policy history

**2001:** Trophic Level Index target set at 4.2

**2008:** “Rule 11”: N & P discharges capped at 2001-04

**2009:** Lake Rotorua and Rotoiti Action Plan

**2010:** Regional Policy Statement notified

**2012:** Oturoa Agreement

**2013:** Regional Policy Statement operative



# Policy direction

- RPS sustainable nitrogen limit

435 tN/yr = 320t reduction

To be achieved by 2032; intermediate catchment-wide target to achieve 70% by 2022

Require, including by way of rules, the managed reduction of any nutrient losses that are in excess of the limits

- 50% reduction in pastoral load

526 tN/yr → 256 tN/yr

- Existing rules not enough (Rule 11 capping)

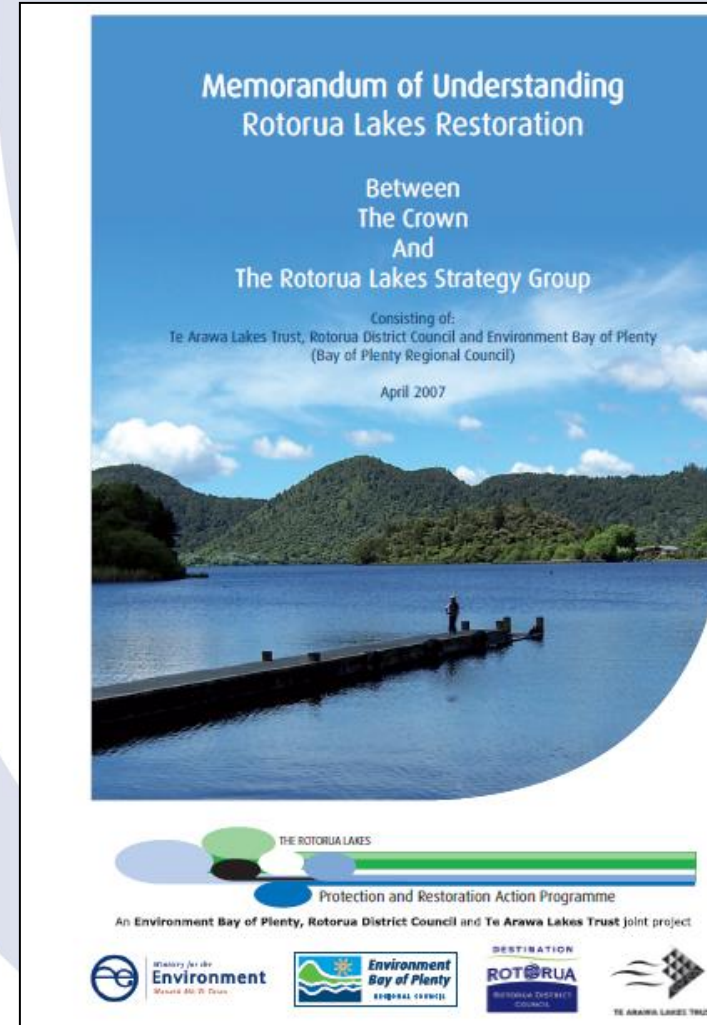
- Rules and incentives project initiated

- Stakeholder Advisory Group established



# Crown Funding

- \$144 million programme
- MOU 2006
- Crown funding 50%
- 2014 Revised Funding Deed – from projects to outcomes
- \$45.5 million for “incentives”



# Integrated Framework

## Rules Programme – 140 tonne reduction

By 2015	Farm Nutrient Plans	Plans will be put in place for every farm, setting out a practical pathway of staged nitrogen reductions.
By 2017	Resource consents	Farms will be consented, with a Farm Nutrient Plan as a consent condition.
By 2032	Nitrogen Discharge Allowances	Average of 35 kgN/ha/yr for dairy and 13 kgN/ha/yr for drystock, with adjustments made for geophysical and farm system characteristics.

*\$5.5m available to support meeting the requirements of the rules and to engage with the incentives fund.*

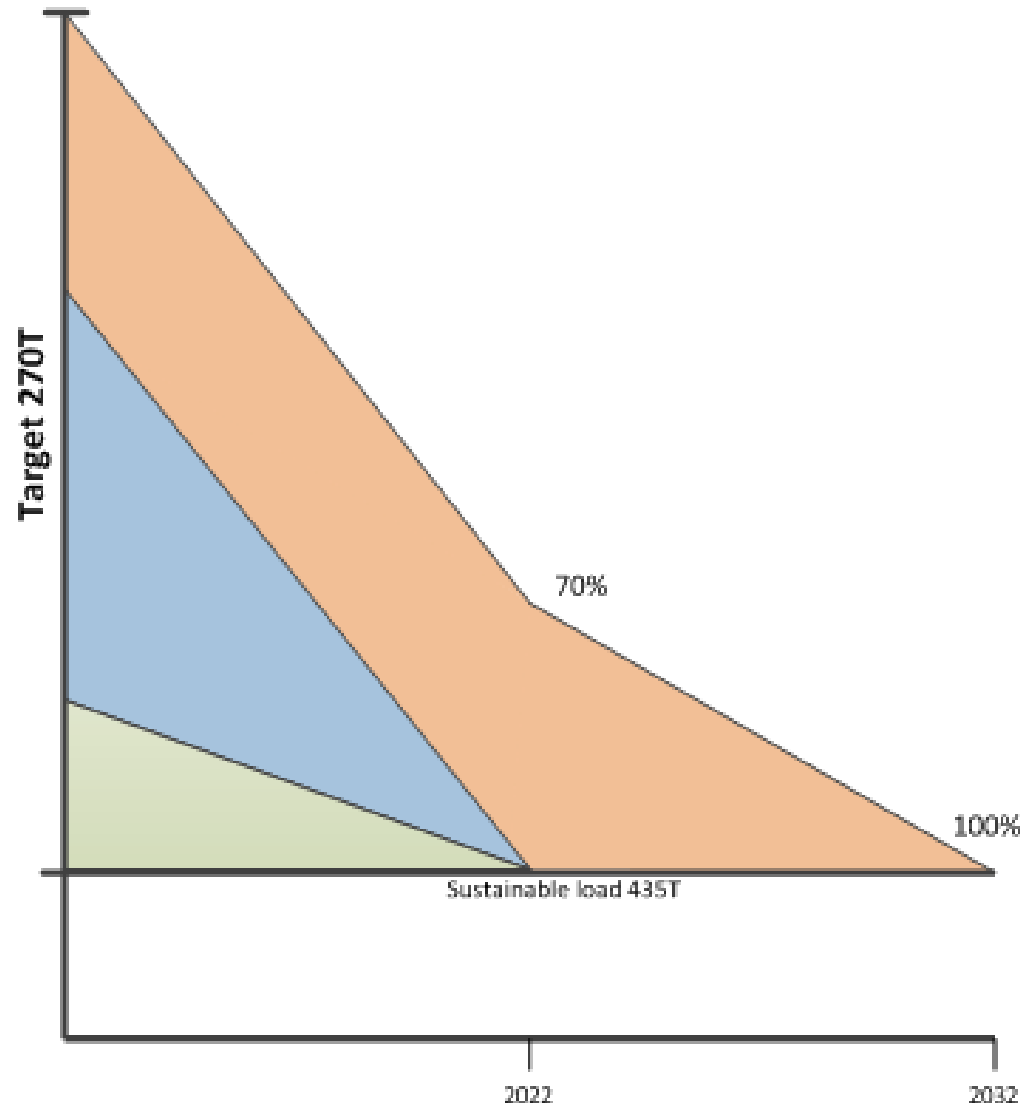
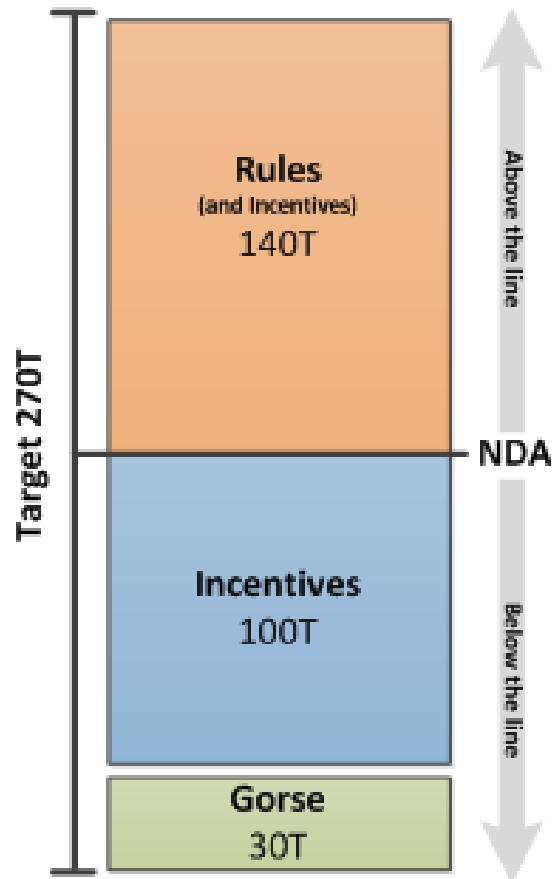
## Incentives Programme – 100 tonne reduction

By 2022	Incentives fund	\$40m “below the line” to remove 100 tonnes of nitrogen.
---------	-----------------	--

## Gorse Programme – 30 tonne reduction

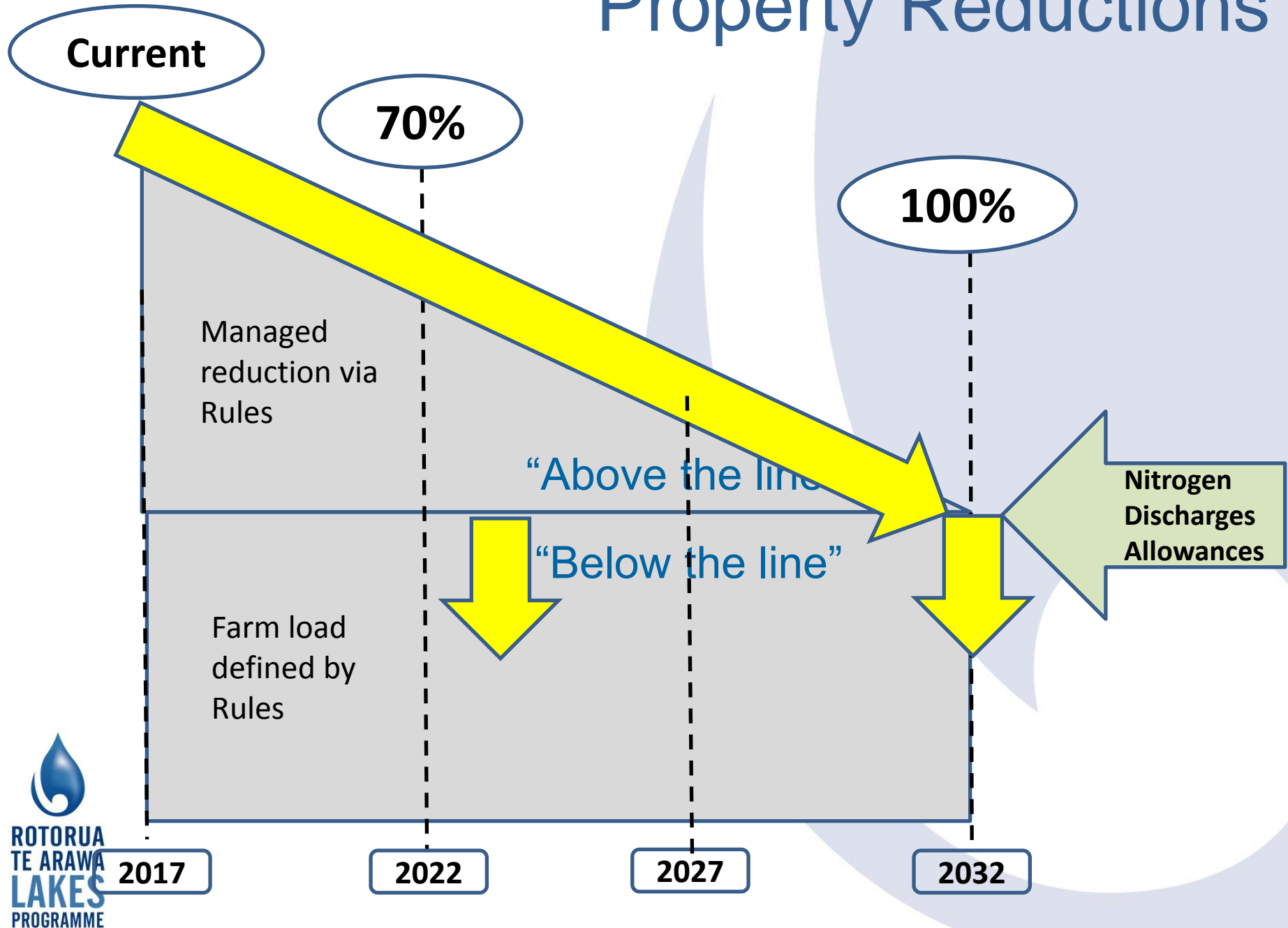
By 2022	Gorse fund	Separate funding to remove 30 tonnes of nitrogen from gorse.
---------	------------	--

## Pastoral Nitrogen Reductions





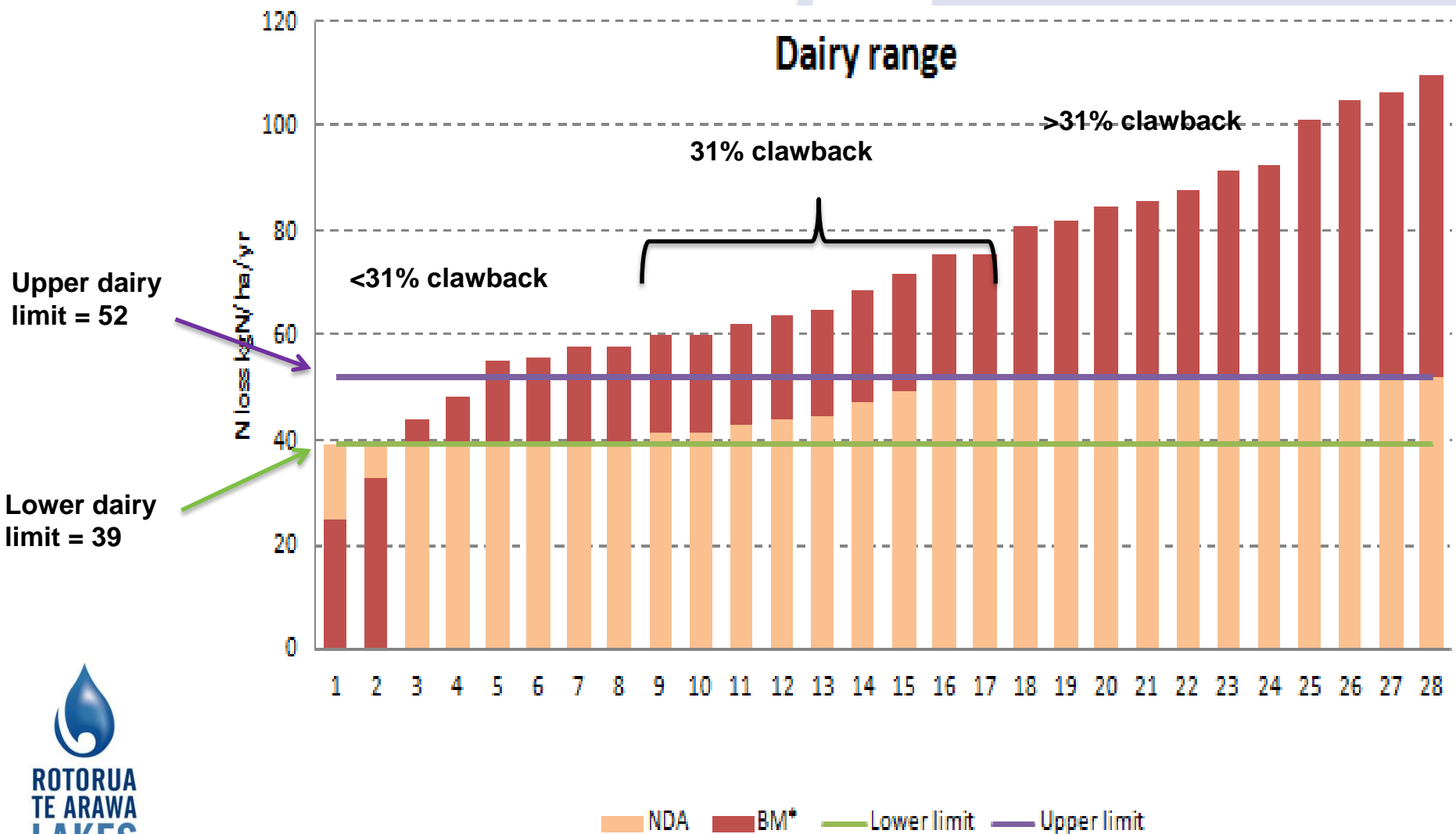
# Property Reductions



# Allocation

- Methodology to change Benchmark into Nutrient Discharge Allowance
- Long process of debate through Stakeholder Advisory Group (StAG)
- Options and then ranges

# Dairy Proposed Allocation





# and Trading...

- Can nutrient trading help?
- Short term entitlements
- Long term NDA trading
- Long term shift towards natural capital?
- Interaction with the Incentives Scheme

# Process for rule development

**We are here**



## **Preparation**

- Consultation



Section 32

## **Notification**

- Submissions
- Further submissions

## **Hearing of submissions**

- Council's decisions on submissions

## **Appeals on Council's decisions**

- Environment Court decision

## **Council approves**

- Becomes operative

# Not just Rules.....

- Continuing science and monitoring programmes
- Engineering solutions (50 tonnes)
- Gorse Project (\$3 million)
- Advice and Support (\$5.5 million)
- Lake Rotorua Incentives Board (\$40 million)



# Thank you, questions

