

# Land & Environment Plans

A white line-art outline of a sheep, shown in profile facing right. The outline is simple and clean, capturing the essential shape of the sheep's body, legs, and head.

**Erica van Reenen**

Environment Extension Manager, Beef + Lamb New Zealand

FOR THE  
SECTOR

# PRIORITIES

A confident and profitable sheep and beef industry

Help farmers make informed business decisions and promote their collective interests

## Supporting informed business decisions

- + Investing in Research and Development that meets the needs of farmers and the sector
- + Developing farm and farmer capability

## Delivering knowledge that drives farm performance

## Promoting collective interests

Know our farmers

- + Investing in Research and Development that meets the needs of farmers and the sector
- + Attract and retain talent for the sector
- + Developing farm and farmer capability

Build partnerships to deliver

## Supporting the sector's market opportunities

### Promoting collective interests

## Advocating for farmers ability to operate

- + Attract and retain talent for the sector
- + Supporting the sector's market opportunities
- + Advocating for farmers ability to operate

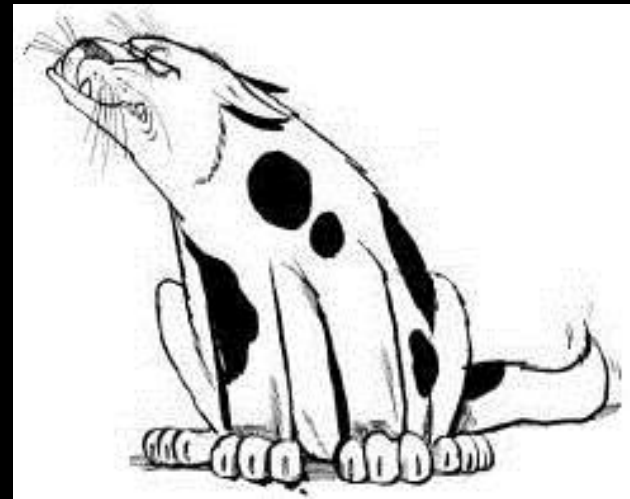
## Building our sector's confidence and profile within communities

- + Building our sector's confidence and profile within communities

# PURPOSE OF B+LNZ

PRINCIPLES





# RISK MANAGEMENT & PLANNING





## Written Plan

- Stock-take of land, soil and water
- Assessment of production opportunities and environmental risks
- Response plan outlining specific actions





0600 000 000 | 0800 233 352 | WWW.BEEFLAMB.NZ.COM  
FOR FARMERS

WWW.BEEFLAMB.NZ.COM  
FOR FARMERS

WWW.BEEFLAMB.NZ.COM  
FOR FARMERS

[www.beeflambnz.com/lep](http://www.beeflambnz.com/lep)





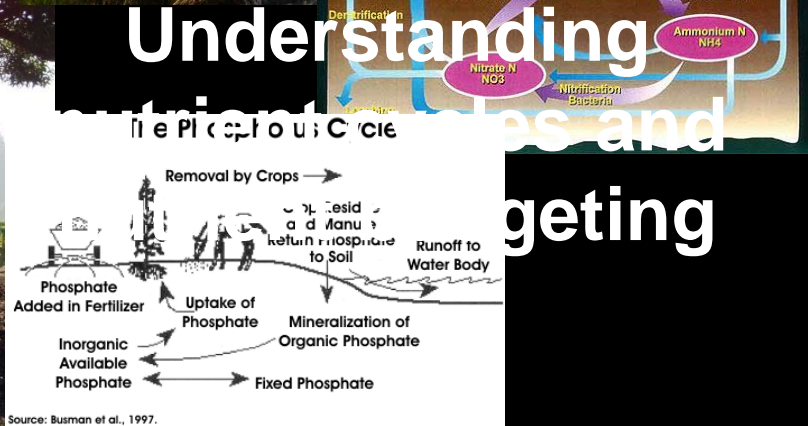
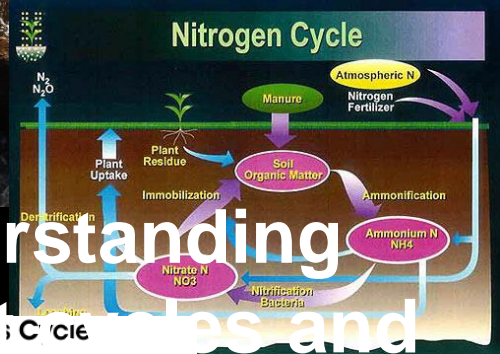
Matching management to land capability



Riparian protection  
*Stock exclusion, planting, crossings/bridges, fencing*



Cropping management particularly in winter



Understanding  
nutrient cycles and  
budgeting

- Understand the farm goals
- Have a long-term plan – written (hopefully!)
- Nutrient Budget

**OVERSEER**  
My Account Logout Folders \ ASNM \ Lake Taupo Sheep and Beef N credits

Scenario reports

Nutrient Budget	Nitrogen	Phosphorus	Comments	Summary	Nitrogen overview	Phosphorus	
(kg/ha/yr)	N	P	K	S	Ca	Mg	Na
<b>Nutrients added</b>							
Fertiliser, lime & other	16	13	0	15	32	0	0
Rain/clover N fixation	44	0	1	2	1	2	4
Irrigation	0	0	0	0	0	0	0
Supplements	6	1	5	1	1	0	0
<b>Nutrients removed</b>							
As products	11	2	1	1	4	0	0
Exported effluent	0	0	0	0	0	0	0
As supplements and crop residues	0	0	0	0	0	0	0
To atmosphere	13	0	0	0	0	0	0
To water	7	1.0	7	15	6	2	32
<b>Change in farm pools</b>							
Plant Material	0	0	0	0	0	0	0
Organic pool	35	7	1	2	0	0	0
Inorganic mineral	0	3	-9	0	-1	0	-4
Inorganic soil pool	0	1	7	0	26	1	-23

[Download this report](#)



# Farm Map - Woodlands Hills

As at 1/01/1990

- Main Water courses
- Native Bush
- ..... Scrub.
- ↑ Plantation Forestry
- ..... Wet areas
- Bridge + yards
- Dams.
- Poplars & willows



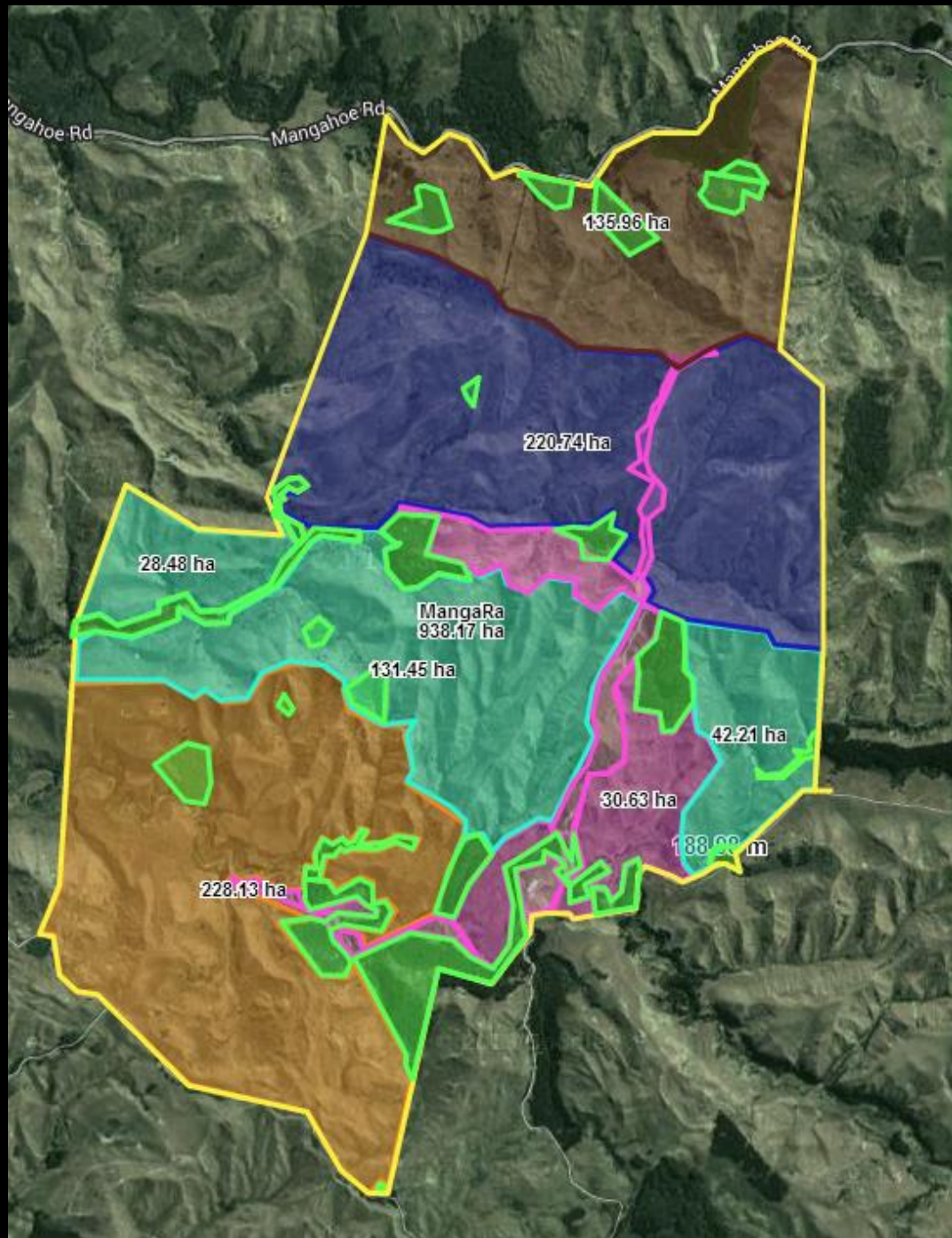
# Example



## Water Quality: Phosphorus

Priority Rank each response in order of priority	Issue Detail the issue of concern	Response Specify your response to minimise or manage the issue	Cost Estimate cost	Time-Frame Time-frame to be completed in	Progress Tick when completed
1	Stock accessing water courses	Have trough water in every paddock	\$250,000	2016-2018	
2	Stock accessing water courses and getting out of paddocks	Fence off main water courses	\$200,000	2018	
3	Poor soil fertility	Put on more P fertiliser to achieve optimum levels	\$500,000	2020	
4	Run-off into waterways	Regenerate riparian buffer strips around waterways	\$100,000	2030	
5	P fertiliser getting into waterways	Use maps and skilled pilots to avoid direct application to waterways	\$0	2014 onwards	





# Workshops



- Workshops – 10 to 15 farmers
- Partnerships encouraged
- Overseer, Farm Map
- Online/Electronic





# QUESTIONS



**“The secret of success is not in predicting the future; it is creating people who will thrive in a future that can’t be predicted” – *unknown* –**

**Erica.vanReenen@beeflambnz.com  
Twitter: @ericavrnz**