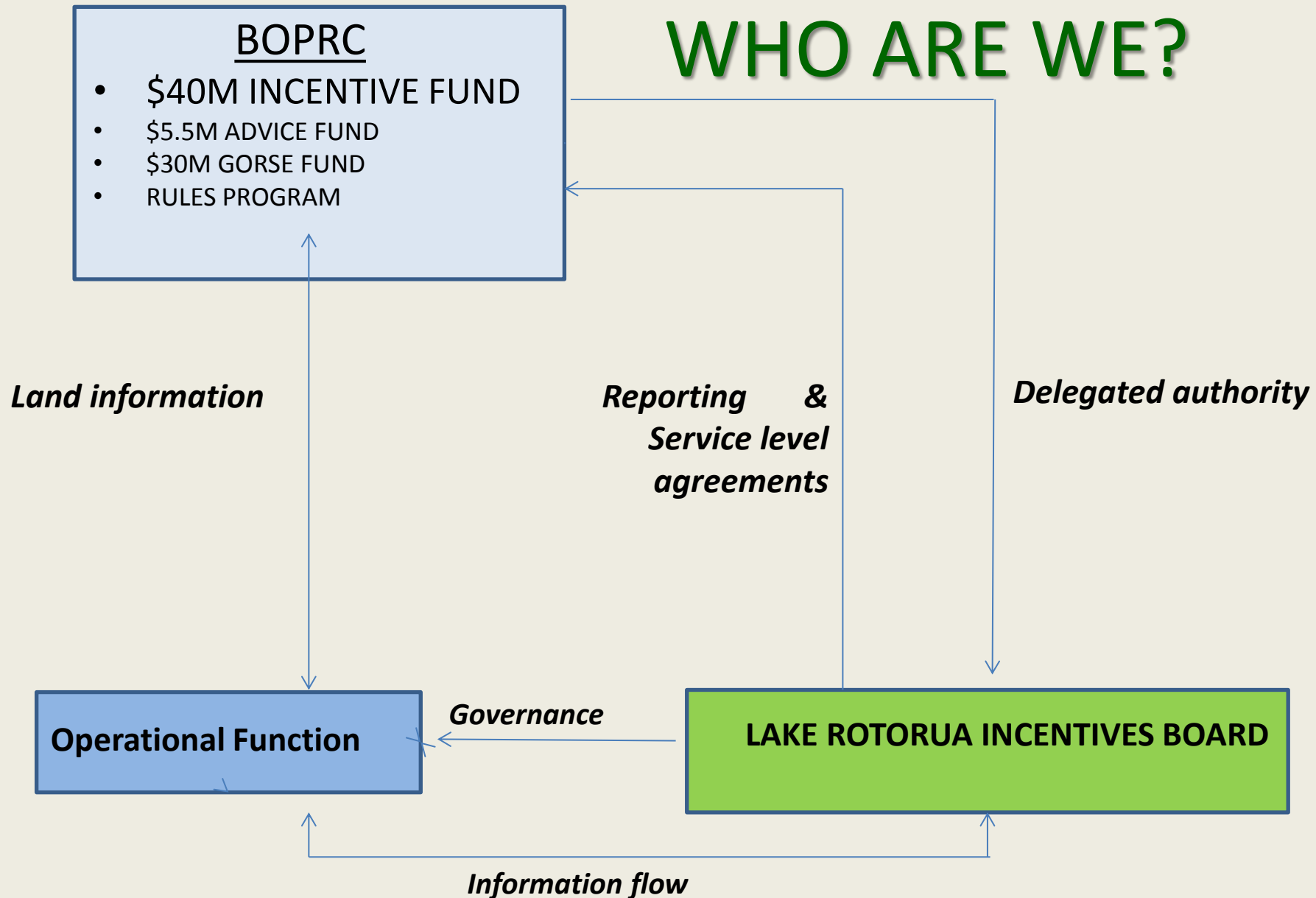




“Open for Business”

Opportunities Symposium June 2015

WHO ARE WE?



Board Structure

- Judith Stanway (Chairperson)
- Dr Tanira Kingi
- Colin Homes
- Dr Tony Petch
- Geoffrey Rice

OPERATIONS

- Te Taru White (Programme Director)
- Executive Administrator (Appointment pending)

Terms of Reference

- ❖ Achieve a permanent 100 tonnes reduction in the discharge of nitrogen from the Lake Rotorua groundwater catchment within a budget of \$40million by December 2022;
- ❖ Negotiate agreements to reduce nitrogen;
- ❖ Collaborate, coordinate and communicate with relevant agencies;
- ❖ Ensure co-ordination with the Rules Programme and compatibility with the Rotorua Te Arawa Lakes Programme;
- ❖ Adopt business rules for the effective operation of the Incentives scheme to give effect to the terms of reference

Delegated Authority

- ❖ Agree to enter into agreements on the BOPRC's behalf which secure nitrogen reductions in perpetuity;
- ❖ Authorise the payment of funds to secure nitrogen reductions below nitrogen discharge limits;
- ❖ Negotiate contracts for services to manage the Incentives Scheme including service level agreements with the Rotorua Te Arawa Lakes Programme partners;
- ❖ DON'T have the authority to purchase land

Policy Development

❖ Regional Policy Statement

- Limit set – 435 tN/yr sustainable limit;
- To be achieved by 2032;
- intermediate catchment-wide target to achieve 70% by 2022
- Combination of NDAs, Incentives and Gorse conversion

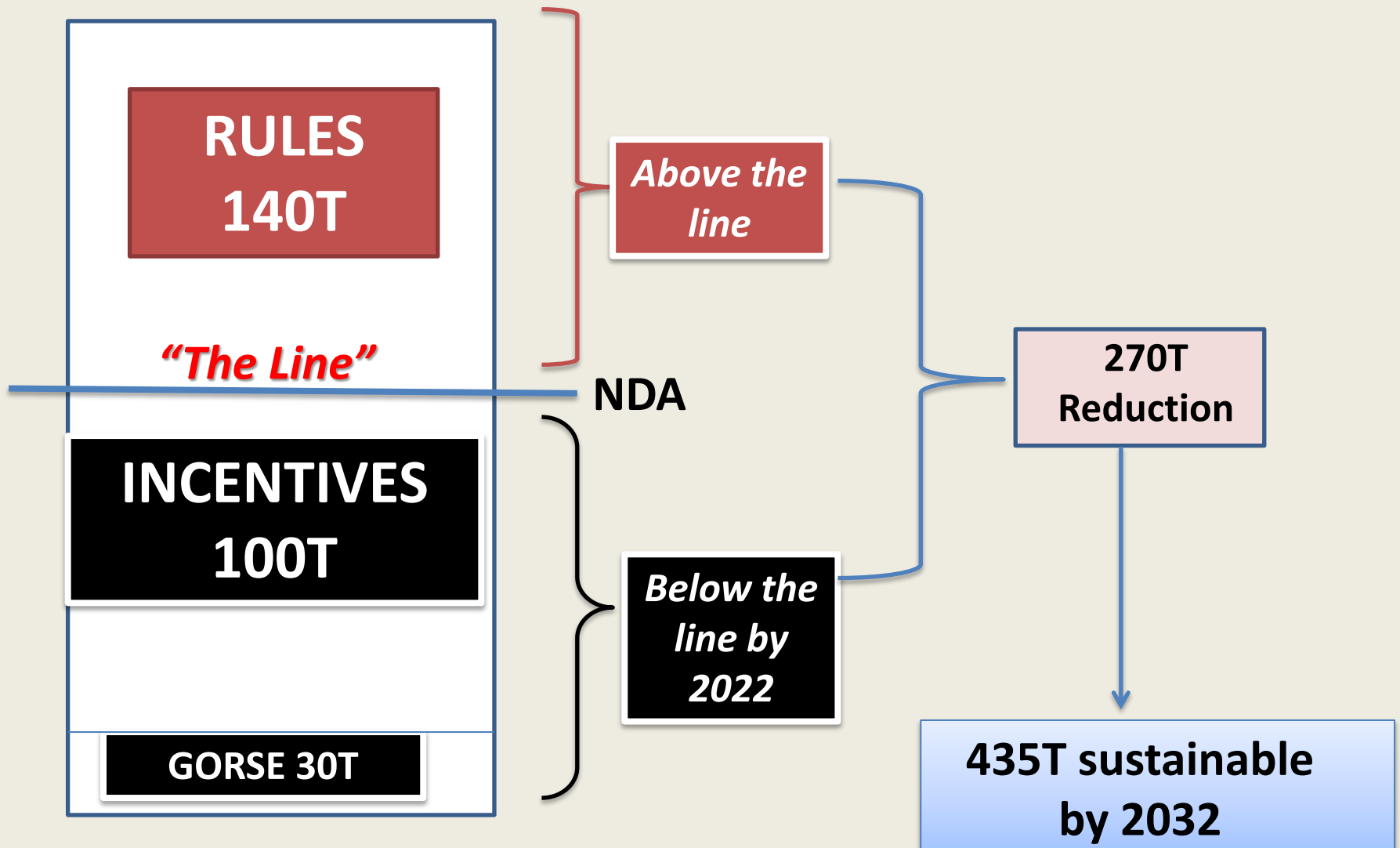
❖ Seven Year Plan

- \$45.5 million nutrient reduction fund

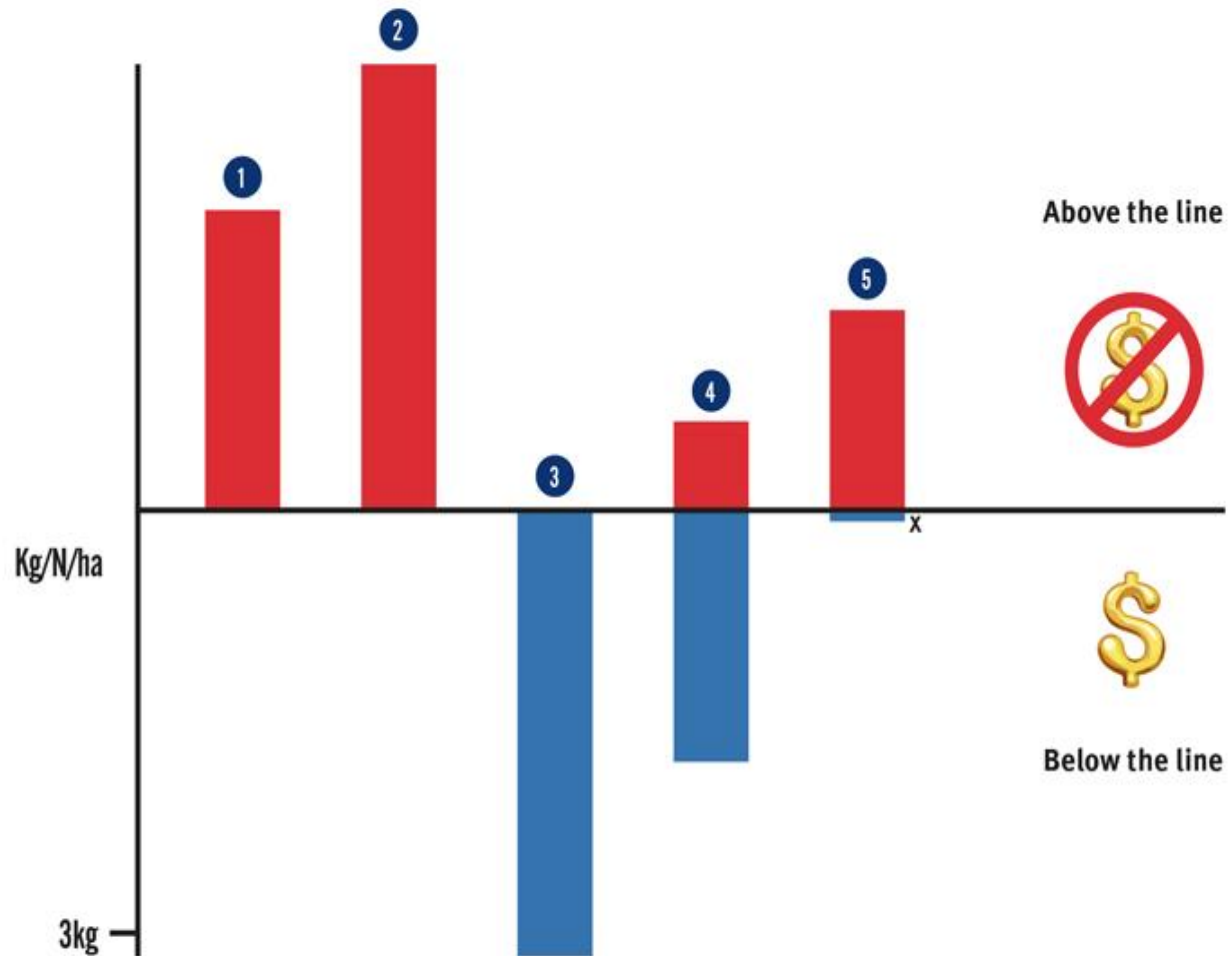
Support Available

- ❖ \$45.5 million fund to incentivise landowners to achieve the reductions needed:
 - \$5.5m for support and advice
 - \$2.2m for Farm “N” Plans and advisory support;
 - \$3.3m for Management support and research;
 - \$40m to purchase 100 tonnes of nitrogen

APPROVED APPROACH



How it works



Above the line



Below the line

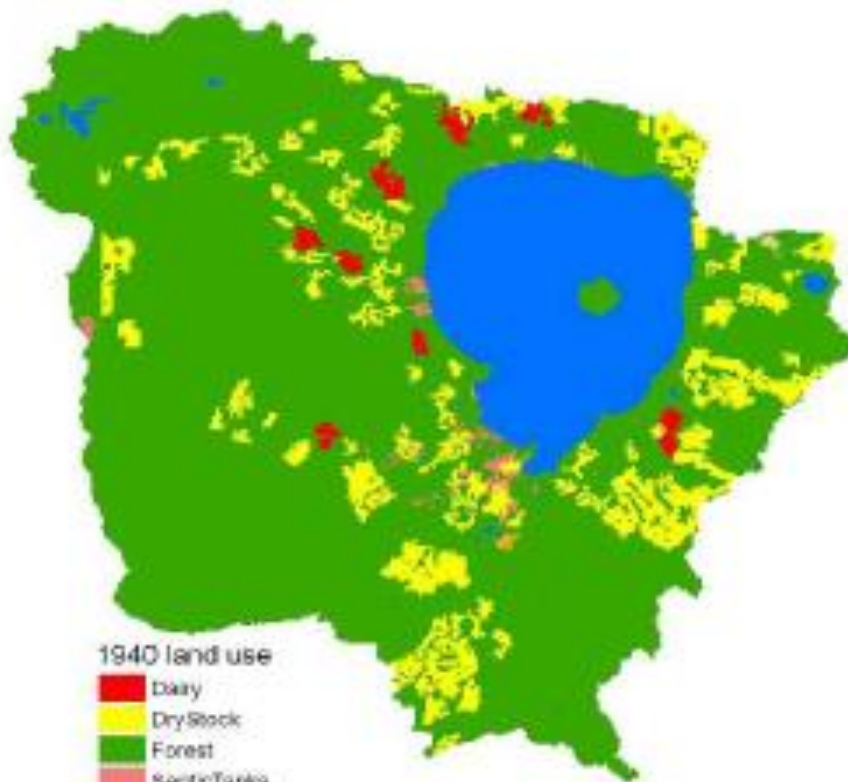


Dairy	30-40
Drystock	10-20
	<10kg



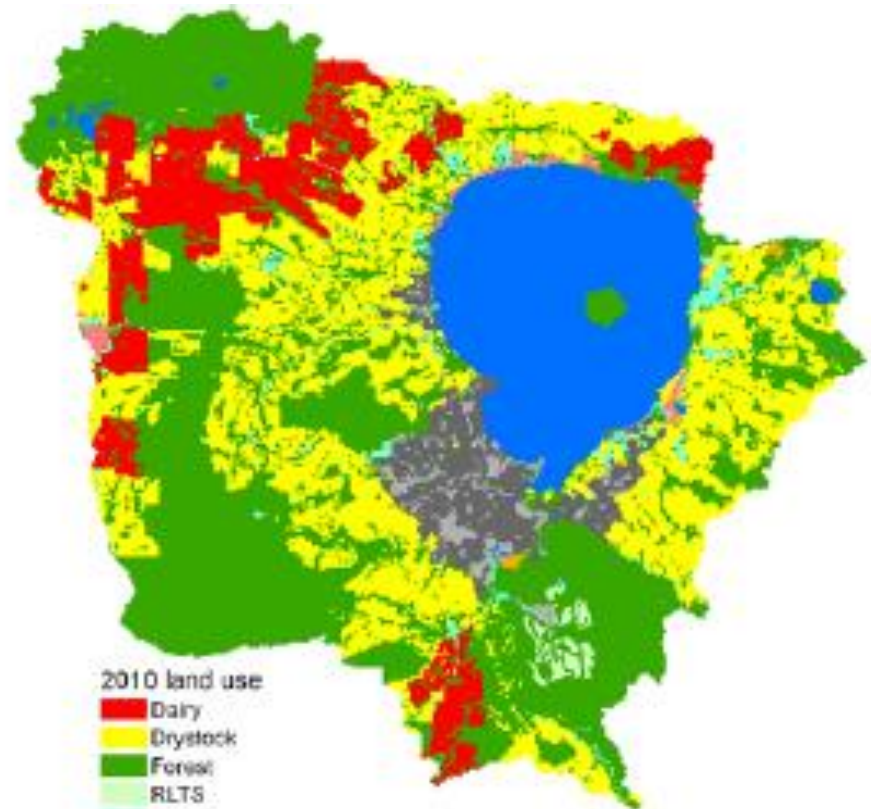
Groundwater (GNS 2014)	45,721
Surface runoff (total)	42,258
Groundwater additional to surface	3,463

Land Use 1940 and 2010



1940 land use

- Dairy
- Dry Stock
- Forest
- Septic Tanks
- Tikitere
- Water
- Whaka

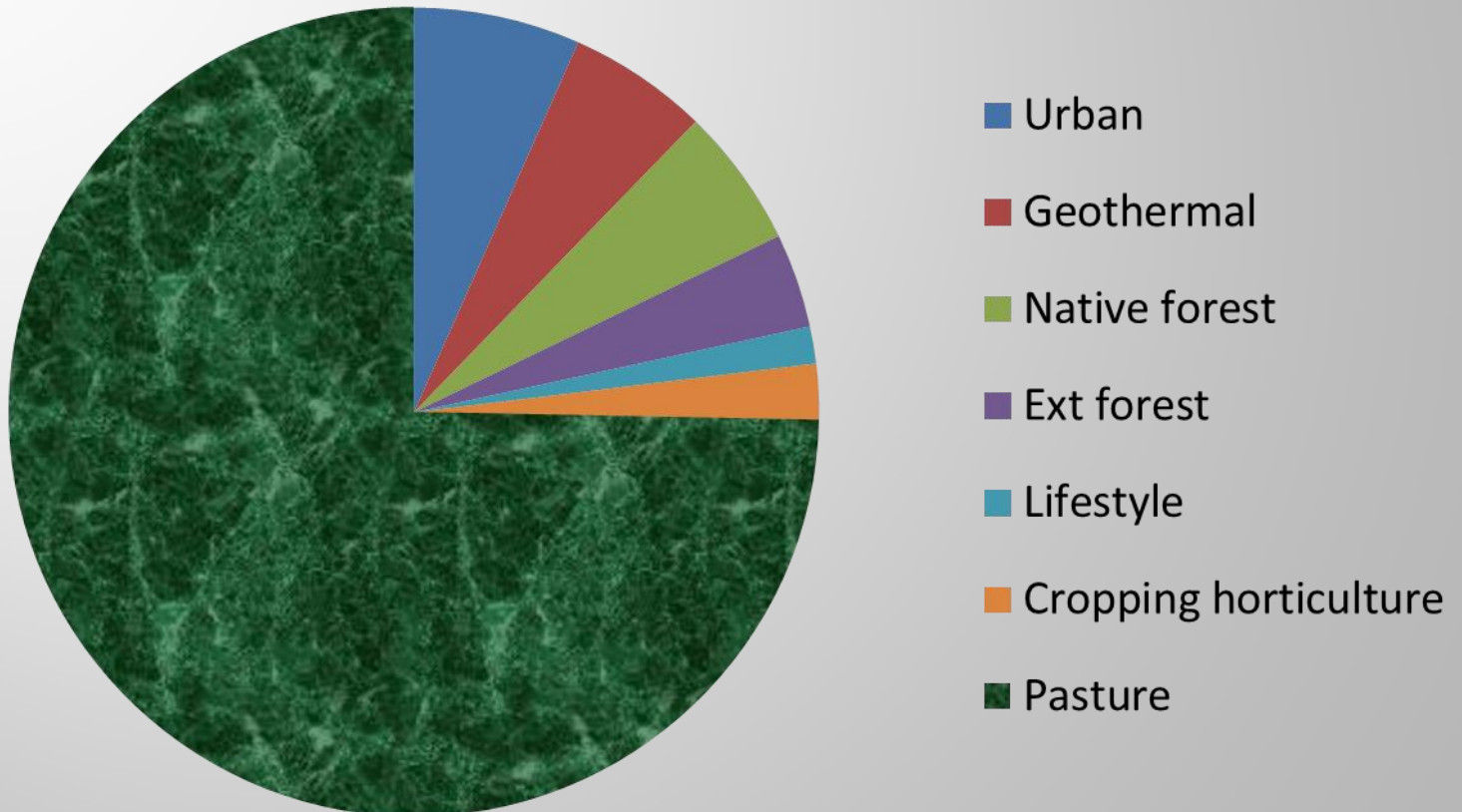


2010 land use

- Dairy
- Dry stock
- Forest
- RLTS
- LifeStyle
- Septic Tanks
- Tikitere
- Urban
- UOS
- Water
- Whaka

Sources of Nitrogen

Current Nitrogen Export



Tenure by property size


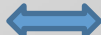
Size	Maori		Private	
2-10ha	58	270ha	433	1984ha
10-40ha	33	710ha	174	3332ha
40-100ha	19	1156ha	49	3157ha
100+ha	23	7702ha	39	13344ha

Land Use by Ownership

Size	Maori	Private
Drystock	5,267 ha (13%)	11,116ha (27%)
Dairy	1,200ha (3%)	3,784ha (9%)
Forestry	1,715ha (4%)	7,148ha (18%)
Bush & Scrub	2,790ha (7%)	7,411ha (18%)

Lake Taupo Protection Trust –A comparison

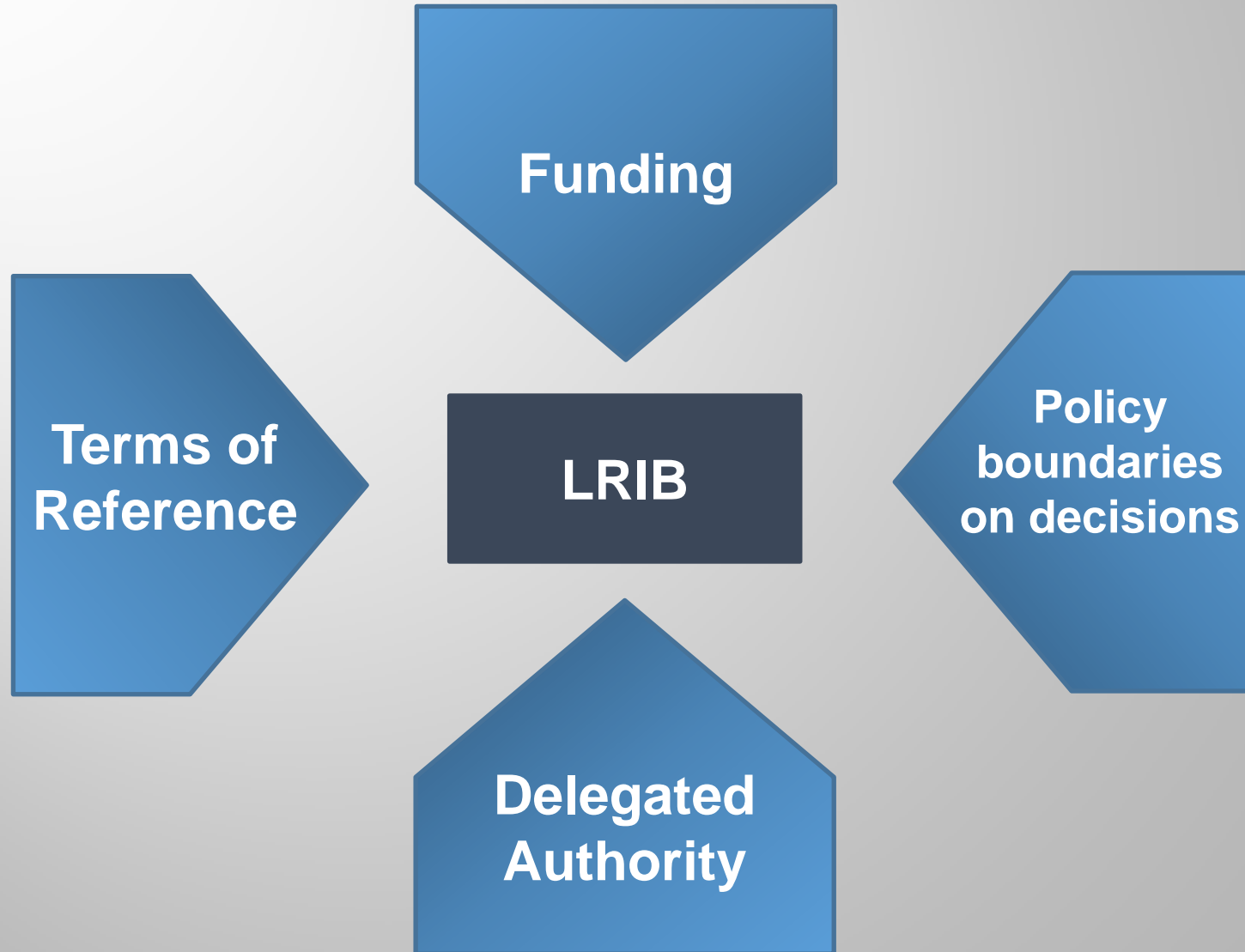
LAKE TAUPO PROTECTION TRUST

- Council controlled organisation/Trust; 
- Responsibility for \$89m fund all inclusive; 
- Reduce “N” by 20% by 2020 benchmarked to 2001-5 levels; 
- Rules essentially in place at the start; 
- Significant Iwi land ownership (>50%) with large blocks available for forestry; 
- Can purchase land. 

LAKE ROTORUA INCENTIVES BOARD

- Sub-committee of BOPRC;
- Responsibility for \$40m fund only;
- Purchase 100T of “N” below the line by Dec 2022;
- Rules yet to be confirmed;
- 25% Iwi land ownership with large number of smaller blocks;
- Cannot purchase land.

Framework Summary



Conclusion

- ❖ The Lakes Rotorua Incentives Board is an arms length subcommittee of the BOPRC;
- ❖ Access to \$40 million to purchase 100 tonnes of nitrogen below the line by December 2022;
- ❖ Willing buyers looking for willing sellers;
- ❖ We are open for business and will be actively seeking opportunities.



TE TARU WHITE
Programme Director

Phone: 07 347 6792
Mobile: 027 921 4266

1130 Pukaki Street
PO BOX 1461
Rotorua

Email: tetaru@lakerotoruaincentives.nz
Web: www.lakerotoruaincentives.nz

Toitu te whenua, Toitu te wai, Toitu te tangata